

# Melbourne

## Inner North Melbourne



**Area (2011):** 37km<sup>2</sup>

**Population density (2011):** 2,660.2 persons/km

**Major centres:** Melbourne, Carlton, Kensington

The City of Melbourne is made up of the CBD and some inner suburbs, including the social housing estates around Kensington and the University precincts. Per annum population growth has been very strong over the last 10 years and this is forecast to continue. Rates of new settler arrivals are around three times the Victorian average but only 1% of these are humanitarian arrivals. The area has a very youthful population with around 72% of people aged between 15-44 years. 54% of people were born overseas and 43% speak a language other than English at home. The most commonly spoken languages other than English are Mandarin, Cantonese and Indonesian.

While it has the highest number of new dwelling approvals per 1000 population in the State it is also ranked 6<sup>th</sup> for social housing.

The rate of total offences is the highest in the state and drug offences are the second highest. Some of this may reflect activity in the city rather than resident behaviour per se. Looking at the relevant AOD measures across the whole of the North & West catchments Melbourne has our highest rate of alcohol-related ambulance call outs, serious road injuries during high alcohol hours, alcohol-related assaults, pharmaceutical ambulance rates, illicit drug-related ambulance rates and total ED presentations for illicit drugs. Melbourne has an extremely high rate of child protection orders at 19.4 per 1000.

## Population

	MELBOURNE	VICTORIA
<b>TOTAL POPULATION</b>	105,376	
<b>ABORIGINAL &amp; TORRES STRAIT ISLANDER PEOPLES</b>	0.3%	0.8%
<b>DIVERSITY</b>		
<b>PERCENT BORN OVERSEAS</b>	53.6%	27.7%
<b>PERCENT BORN IN NON ENGLISH SPEAKING COUNTRY</b>	44.7%	20.9%
<b>PERCENT SPEAKING LANGUAGE OTHER THAN ENGLISH AT HOME</b>	43.0%	24.2%
<b>PERCENT WITH LOW ENGLISH PROFICIENCY</b>	5.4%	4.0%
<b>NEW SETTLER ARRIVALS PER 100,000</b>	4,200.2	1,415.1
<b>SOCIO-ECONOMIC INDICATORS</b>		
<b>UNEMPLOYMENT RATE</b>	6.3%	5.8%
<b>INDEX RELATIVE SOCIO ECONOMIC DISADVANTAGE</b>	1026	1000
<b>MEDIAN HOUSEHOLD INCOME</b>	\$1,352	\$1,216
<b>MORTGAGE STRESS / RENTAL STRESS</b>	9.8% / 26.9%	11.4% / 25.1%
<b>GAMING MACHINE LOSSES PER HEAD OF ADULT POPULATION</b>	\$727.0	\$549.50
<b>PERCENT OF POPULATION WITH FOOD INSECURITY</b>	2.8%	4.6%
<b>FAMILY INCIDENTS (RATE PER 1000 POPULATION)</b>	10.7	10.8
<b>TOTAL OFFENCES (RATE PER 1000 POPULATION)</b>	294.0	72.2
<b>SUBSTANTIATED CHILD ABUSE (RATE PER 1000 POPULATION)</b>	5.8	6.7
<b>CHILD PROTECTION ORDERS (RATE PER 1000 POPULATION)</b>	19.4	5.2
<b>CHILDREN IN OUT OF HOME CARE (RATE PER 1000 POPULATION)</b>	2.3	4.6
<b>COMMUNITY</b>		
<b>PEOPLE WHO FEEL SAFE WALKING ALONE AFTER DARK</b>	78.0%	70.3%
<b>PERCENT OF POPULATION NEAR TO PUBLIC TRANSPORT</b>	99.2%	74.2%
<b>PEOPLE WHO BELIEVE THERE ARE GOOD FACILITIES AND SERVICES IN THE LGA</b>	85.7%	85.2%
<b>HEALTH &amp; WELLBEING</b>		
<b>PERSONS REPORTING FAIR OR POOR HEALTH</b>	16.7%	15.9%
<b>GENERAL PRACTICES PER 1000</b>	2.0	1.2
<b>PHARMACIES PER 1000</b>	0.5	0.2

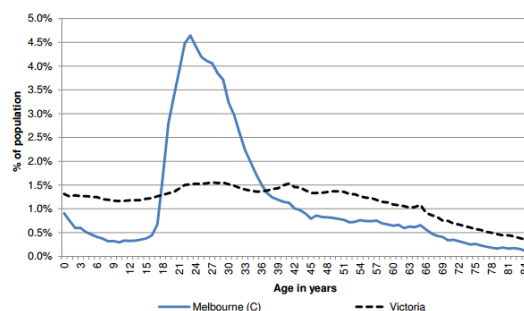
### Top 5 overseas countries of birth:

- China (9.0%)
- Malaysia (6.2%)
- UK (4.0%)
- India (3.6%)
- Indonesia (3.4%)

### Top 5 languages other than English:

- Mandarin (11.7%)
- Cantonese (5.5%)
- Indonesian (3.0%)
- Arabic (1.7%)
- Korean (1.6%)

## Age distribution (2012)



## Alcohol, tobacco & other drugs in Melbourne

	MELBOURNE	VICTORIA
PERCENTAGE PERSONS WHO ARE CURRENT SMOKERS (18+)	9.5%	15.7%
18+ FEMALES CURRENT SMOKERS	6.4%	12.9%
18+ MALES CURRENT SMOKERS	12.9%	18.5%
<b>ALCOHOL</b>		
PERCENTAGE PERSONS AT RISK OF SHORT TERM HARM FROM ALCOHOL CONSUMPTION	10.1%	10.2%
PURCHASED ALCOHOL IN THE LAST 7 DAYS	45.0%	36.3%
7 DAY \$ SPEND ON PACKAGED LIQUOR (OF THOSE PURCHASING)	\$53.0	\$45.00
7 DAY \$ SPEND AT A LICENSED PREMISES (OF THOSE PURCHASING)	\$42.0	\$45.00
ALCOHOL AMBULANCE RATE: TOTAL (ATTENDENCES PER 10,000)	152	
ALCOHOL AMBULANCE RATE: 15-24 YRS (ATTS./10,000)	219.2	
ALCOHOL AMBULANCE RATE: MALE (ATTS./10,000)	200.2	
ALCOHOL AMBULANCE RATE: FEMALE (ATTS./10,000)	102.5	
ALCOHOL ADIS RATE: TOTAL (TX EOCS PER 10,000)	15.5	
ALCOHOL ADIS RATE: 15-24 YRS (TX EOCS PER 10,000)	7.8	
ALCOHOL ADIS RATE: MALE (TX EOCS PER 10,000)	24.3	
ALCOHOL ADIS RATE: FEMALE (TX EOCS PER 10,000)	6.5	
ALCOHOL ED RATE: TOTAL (PRESENTATIONS PER 10,000)	26.0	
ALCOHOL ED RATE: 15-24 YRS (PRSTNS/10,000)	20.9	
ALCOHOL ED RATE: MALE (PRSTNS/10,000)	38.1	
ALCOHOL ED RATE: FEMALE (PRSTNS/10,000)	13.8	
SERIOUS ROAD INJURIES DURING HIGH ALCOHOL HOURS: TOTAL (PER 10,000)	10.5	
SERIOUS ROAD INJURIES DURING HAH: 15-24 YRS (PER 10,000)	9.9	
SERIOUS ROAD INJURIES DURING HAH: MALE (PER 10,000)	13.2	
SERIOUS ROAD INJURIES DURING HAH: FEMALE (PER 10,000)	7.7	
ALCOHOL ASSAULT HAH: TOTAL (PER 10,000)	70.2	
ALCOHOL ASSAULT HAH: 18-24 YRS (PER 10,000)	129.7	
ALCOHOL ASSAULT HAH: MALE (PER 10,000)	106.1	
ALCOHOL ASSAULT HAH: FEMALE (PER 10,000)	32.2	
ALCOHOL FAMILY VIOLENCE RATE: TOTAL (DEFINITE INCIDENTS PER 10,000)	23.4	
ALCOHOL FAMILY VIOLENCE RATE: 18-24 YRS (DEFINITE INCIDENTS PER 10,000)	20.5	
ALCOHOL FAMILY VIOLENCE RATE: MALE (DEFINITE INCIDENTS PER 10,000)	9.9	
ALCOHOL FAMILY VIOLENCE RATE: FEMALE (DEFINITE INCIDENTS PER 10,000)	36.8	
<b>YOUNG PEOPLE</b>		
PERCENT 15-17 YEAR OLDS WHO DRANK ALCOHOL IN THE PAST 30 DAYS	55.6%	24.7%
PERCENT 15-17 YEAR OLDS WHO SMOKED IN THE PAST 30 DAYS	15.8%	12.9%
PERCENT 15-17 YEAR OLDS WHO EVER - USED MARIJUANA	15.2%	10.9%
PERCENT 15-17 YEAR OLDS WHO EVER - SNIFFED GLUE OR CHROMED	5.2%	7.8%
PERCENT 15-17 YEAR OLDS WHO EVER - USED OTHER ILLEGAL DRUGS	6.1%	3.0%
<b>PHARMACEUTICALS</b>		
PHARMACEUTICAL AMBULANCE RATE: TOTAL (ATTENDANCES PER 10,000)	51.1	
PHARMACEUTICAL AMBULANCE RATE: 15-24 YRS (ATTS./10,000)	15.6	
PHARMACEUTICAL AMBULANCE RATE: MALE (ATTS./10,000)	56.5	
PHARMACEUTICAL AMBULANCE RATE: FEMALE (ATTS./10,000)	45.6	
PHARMACEUTICAL ADIS RATE: TOTAL (TX EOCS PER 10,000)	2.8	
PHARMACEUTICAL ADIS RATE: 15-24 YRS (TX EOCS PER 10,000)	n/a	
PHARMACEUTICAL ADIS RATE: MALE (TX EOCS PER 10,000)	2.8	
PHARMACEUTICAL ADIS RATE: FEMALE (TX EOCS PER 10,000)	2.9	
PHARMACEUTICAL ED PRESENTATION RATE: TOTAL (PRESENTATIONS PER 10,000)	14	
PHARMACEUTICAL ED RATE: 15-24YRS (PRSTNS/10,000)	18.4	
PHARMACEUTICAL ED RATE: MALE (PRSTNS/10,000)	13.6	
PHARMACEUTICAL ED RATE: FEMALE (PRSTNS/10,000)	14.3	
<b>ILLICIT DRUGS</b>		
ILLICIT AMBULANCE RATE: TOTAL (ATTS./10,000)	63.7	
ILLICIT AMBULANCE RATE: 15-24YRS (ATTS./10,000)	119.3	
ILLICIT AMBULANCE RATE: MALE (ATTS./10,000)	84.7	
ILLICIT AMBULANCE RATE: FEMALE (ATTS./10,000)	42	
ILLICIT ADIS RATE: TOTAL (TX EOCS PER 10,000)	22.2	
ILLICIT ADIS RATE: 15-24 YRS (TX EOCS PER 10,000)	21.7	
ILLICIT ADIS RATE: MALE (TX EOCS PER 10,000)	36	
ILLICIT ADIS RATE: FEMALE (TX EOCS PER 10,000)	8.3	
ILLICIT ED RATE: TOTAL (PRSTNS/10,000)	4.7	
ILLICIT ED RATE: 15-24 YRS (PRSTNS/10,000)	2.5	
ILLICIT ED RATE: MALE (PRSTNS/10,000)	7.7	
ILLICIT ED RATE: FEMALE (PRSTNS/10,000)	1.5	
<b>SERVICE USE &amp; ACCESS</b>		
DRUG USE & POSSESSION OFFENCES PER 1000 POPULATION	16.8	3.8
DRUG AND ALCOHOL CLIENTS PER 1000	4.1	5.8

### Comparisons & context:

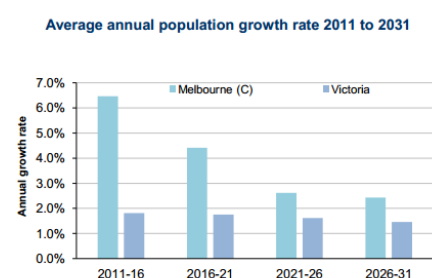
\*Red text – shows where the figure is in the top 3 highest rates for all 14 LGAs in the North & West catchments.

\* Orange text – shows that the rate is higher than the state average

## Mental health in Melbourne

	MELBOURNE	VICTORIA
<b>POPULATION</b>		
PEOPLE REPORTING HIGH/VERY HIGH LEVELS OF PSYCHOLOGICAL DISTRESS (RANK)	8.8% (50)	11.10%
LIFETIME PREVALENCE OF ANXIETY AND DEPRESSION M/ F	15/ 25.1	14.6/25.0
<b>SERVICE USE &amp; ACCESS</b>		
NUMBER OF REGISTERED MENTAL HEALTH CLIENTS	980	
REGISTERED MENTAL HEALTH CLIENTS PER 1000 POP (RANK)	9.3 (63)	11.1
MHCSS CLIENTS 2014	106	
MHCSS CLIENTS PER 1000 POPULATION	1.16	
PROPORTION OF PEOPLE WHO SOUGHT PROFESSIONAL HELP FOR A MENTAL HEALTH PROBLEM	13.70%	12.40%
<b>YOUNG PEOPLE</b>		
CHILDREN WITH EMOTIONAL/BEHAVIOURAL PROBLEMS AT SCHOOL AGE	2.2% (58)	4.30%
ADOLESCENTS WHO REPORT BEING RECENTLY BULLIED	13.3% (71)	17.90%

## Population projections



This graph shows that Melbourne has comparatively high projected population growth to 2031, but that the gap between Melbourne's growth rate and that of the state is expected to narrow overtime.

## Aligned planning priorities



The **City of Melbourne Health & Wellbeing Plan** is incorporated into its Council Plan. Its vision is to be bold, inspirational and sustainable. Smoking rates and experience of anxiety and depression are highlighted. Its health and wellbeing priorities include: social inclusion and opportunities to participate and connect with others; and community safety (focusing on reducing family violence and the use of alcohol and other drugs).



The **Inner North West Melbourne Medicare Local Comprehensive Needs Assessment 2014-2017** identifies 5 key priorities – 1) the need to coordinate care across service system 2) prevention and management of chronic disease 3) health literacy 4) mental and emotional health and wellbeing and 5) alcohol and other drugs. Both the mental health and AoD response include stakeholder consultation/ forums in early 2015 and discussion papers to further identify issues.

The mental health response also aims to increase Access to Allied Psychological Services (ATAPS) and counselling services (including for young people), the PACER response, an after-hours nurse outreach program and a GP mental health education series. The AoD response includes support for the pharmacotherapy network.



The **Inner North West Primary Care Partnership** has a vision of strong partnerships, equitable outcomes and healthy communities. It has two strategic priorities 1) prevention of violence against women (inclusive of children and families) and 2) improving system capacity to increase prevention and support people from priority populations with chronic disease and co-morbidities. Health promotion priorities are identified as mental health, physical activity, harm from addiction/dependence (alcohol, tobacco, gambling and other drugs); health impacts of climate change; access to nutritious food, prevention of family violence and reducing health inequalities (including for Aboriginal people)