

Moonee Valley

Inner North Melbourne



Area (2011): 43km²

Population density (2011): 2,602.8 persons/km

Major centres: Essendon, Avondale Hts, Moonee Ponds

Moonee Valley is located in Melbourne's north-west. Population growth has been considerably below average and future projections are around average. Age distribution in this area is relatively average.

Moonee Valley is diverse; a quarter of people were born in a non-English speaking country and more than 30% speak a language other than English at home. The unemployment rate is below average, household income is above average and mortgage and rental stress are low. That said, the percentage of social housing is the third highest in the State.

Moonee Valley has the third highest rate of gaming machine losses per head of adult population among our 14 LGAs in the North and West catchments (\$766.2pp/year compared with the state average of \$549.5). There are some AOD risks to note in the 15-17 year olds in this area, with higher than average rates of 15-17 year olds who drank alcohol and smoked tobacco in the past 30 days, who have ever used marijuana and other illegal drugs. The overall smoking rate is higher than average – especially among males. Total offences and drug use & possession offences are slightly higher than average.

Population

	MOONEE VALLEY	VICTORIA
TOTAL POPULATION	113,256	
ABORIGINAL & TORRES STRAIT ISLANDER PEOPLES	0.4%	0.8%
DIVERSITY		
PERCENT BORN OVERSEAS	28.9%	27.7%
PERCENT BORN IN NON ENGLISH SPEAKING COUNTRY	24.5%	20.9%
PERCENT SPEAKING LANGUAGE OTHER THAN ENGLISH AT HOME	31.1%	24.2%
PERCENT WITH LOW ENGLISH PROFICIENCY	5.3%	4.0%
NEW SETTLER ARRIVALS PER 100,000	1,284.7	1,415.1
SOCIO-ECONOMIC INDICATORS		
UNEMPLOYMENT RATE	3.3%	5.8%
INDEX RELATIVE SOCIO ECONOMIC DISADVANTAGE	1027	1000
MEDIAN HOUSEHOLD INCOME	\$1,377	\$1,216
MORTGAGE STRESS / RENTAL STRESS	7.3% / 21.8%	11.4% / 25.1%
GAMING MACHINE LOSSES PER HEAD OF ADULT POPULATION	\$766.20	\$549.50
PERCENT OF POPULATION WITH FOOD INSECURITY	2.5%	4.6%
FAMILY INCIDENTS (RATE PER 1000 POPULATION)	7.9	10.8
TOTAL OFFENCES (RATE PER 1000 POPULATION)	74.1	72.2
SUBSTANTIATED CHILD ABUSE (RATE PER 1000 POPULATION)	2.5	6.7
CHILD PROTECTION ORDERS (RATE PER 1000 POPULATION)	3.6	5.2
CHILDREN IN OUT OF HOME CARE (RATE PER 1000 POPULATION)	2.3	4.6
COMMUNITY		
PEOPLE WHO FEEL SAFE WALKING ALONE AFTER DARK	76.9%	70.3%
PERCENT OF POPULATION NEAR TO PUBLIC TRANSPORT	95.7%	74.2%
PEOPLE WHO BELIEVE THERE ARE GOOD FACILITIES AND SERVICES IN THE LGA	93.4%	85.2%
HEALTH & WELLBEING		
PERSONS REPORTING FAIR OR POOR HEALTH	18.5%	15.9%
GENERAL PRACTICES PER 1000	1.2	1.2
PHARMACIES PER 1000	0.2	0.2

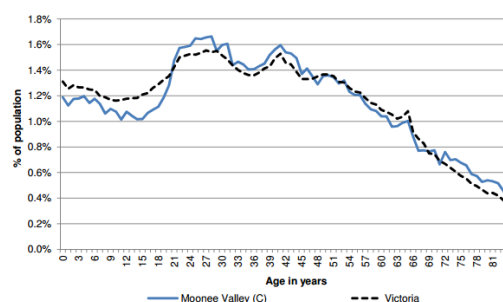
Top 5 overseas countries of birth:

- Italy (5.3%)
- UK (2.5%)
- India (2.4%)
- Vietnam (1.9%)
- Greece (1.4%)

Top 5 languages other than English:

- Italian (8.5%)
- Greek (3.6%)
- Vietnamese (2.2%)
- Cantonese (1.8%)
- Arabic (1.5%)

Age distribution (2012)



Alcohol, tobacco & other drugs in Moonee Valley

	M. VALLEY	VICTORIA
PERCENTAGE PERSONS WHO ARE CURRENT SMOKERS (18+)	16.4%	15.7%
18+ FEMALES CURRENT SMOKERS	12.0%	12.9%
18+ MALES CURRENT SMOKERS	20.1%	18.5%
ALCOHOL		
PERCENTAGE PERSONS AT RISK OF SHORT TERM HARM FROM ALCOHOL CONSUMPTION	7.7%	10.2%
PURCHASED ALCOHOL IN THE LAST 7 DAYS	34.4%	36.3%
7 DAY \$ SPEND ON PACKAGED LIQUOR (OF THOSE PURCHASING)	\$45.0	\$45.00
7 DAY \$ SPEND AT A LICENSED PREMISES (OF THOSE PURCHASING)	\$43.0	\$45.00
ALCOHOL AMBULANCE RATE: TOTAL (ATTENDENCES PER 10,000)	30.7	
ALCOHOL AMBULANCE RATE: 15-24 YRS (ATTS./10,000)	41.3	
ALCOHOL AMBULANCE RATE: MALE (ATTS./10,000)	40.8	
ALCOHOL AMBULANCE RATE: FEMALE (ATTS./10,000)	21.2	
ALCOHOL ADIS RATE: TOTAL (TX EOCS PER 10,000)	14.3	
ALCOHOL ADIS RATE: 15-24 YRS (TX EOCS PER 10,000)	16.1	
ALCOHOL ADIS RATE: MALE (TX EOCS PER 10,000)	20.3	
ALCOHOL ADIS RATE: FEMALE (TX EOCS PER 10,000)	8.7	
ALCOHOL ED RATE: TOTAL (PRESENTATIONS PER 10,000)	13.0	
ALCOHOL ED RATE: 15-24 YRS (PRSTNS/10,000)	19.7	
ALCOHOL ED RATE: MALE (PRSTNS/10,000)	16.6	
ALCOHOL ED RATE: FEMALE (PRSTNS/10,000)	9.6	
SERIOUS ROAD INJURIES DURING HIGH ALCOHOL HOURS: TOTAL (PER 10,000)	2	
SERIOUS ROAD INJURIES DURING HAH: 15-24 YRS (PER 10,000)	4.8	
SERIOUS ROAD INJURIES DURING HAH: MALE (PER 10,000)	3.1	
SERIOUS ROAD INJURIES DURING HAH: FEMALE (PER 10,000)	1	
ALCOHOL ASSAULT HAH: TOTAL (PER 10,000)	10.2	
ALCOHOL ASSAULT HAH: 18-24 YRS (PER 10,000)	31.9	
ALCOHOL ASSAULT HAH: MALE (PER 10,000)	13.3	
ALCOHOL ASSAULT HAH: FEMALE (PER 10,000)	7	
ALCOHOL FAMILY VIOLENCE RATE: TOTAL (DEFINITE INCIDENTS PER 10,000)	12	
ALCOHOL FAMILY VIOLENCE RATE: 18-24 YRS (DEFINITE INCIDENTS PER 10,000)	16.4	
ALCOHOL FAMILY VIOLENCE RATE: MALE (DEFINITE INCIDENTS PER 10,000)	6.1	
ALCOHOL FAMILY VIOLENCE RATE: FEMALE (DEFINITE INCIDENTS PER 10,000)	17	
YOUNG PEOPLE		
PERCENT 15-17 YEAR OLDS WHO DRANK ALCOHOL IN THE PAST 30 DAYS	42.6%	24.7%
PERCENT 15-17 YEAR OLDS WHO SMOKED IN THE PAST 30 DAYS	37.4%	12.9%
PERCENT 15-17 YEAR OLDS WHO EVER - USED MARIJUANA	22.7%	10.9%
PERCENT 15-17 YEAR OLDS WHO EVER - SNIFFED GLUE OR CHROMED	5.4%	7.8%
PERCENT 15-17 YEAR OLDS WHO EVER - USED OTHER ILLEGAL DRUGS	6.8%	3.0%
PHARMACEUTICALS		
PHARMACEUTICAL AMBULANCE RATE: TOTAL (ATTENDANCES PER 10,000)	20.9	
PHARMACEUTICAL AMBULANCE RATE: 15-24 YRS (ATTS./10,000)	14.3	
PHARMACEUTICAL AMBULANCE RATE: MALE (ATTS./10,000)	16.8	
PHARMACEUTICAL AMBULANCE RATE: FEMALE (ATTS./10,000)	24.8	
PHARMACEUTICAL ADIS RATE: TOTAL (TX EOCS PER 10,000)	1.8	
PHARMACEUTICAL ADIS RATE: 15-24 YRS (TX EOCS PER 10,000)	n/a	
PHARMACEUTICAL ADIS RATE: MALE (TX EOCS PER 10,000)	1.6	
PHARMACEUTICAL ADIS RATE: FEMALE (TX EOCS PER 10,000)	2	
PHARMACEUTICAL ED PRESENTATION RATE: TOTAL (PRESENTATIONS PER 10,000)	12	
PHARMACEUTICAL ED RATE: 15-24YRS (PRSTNS/10,000)	28.6	
PHARMACEUTICAL ED RATE: MALE (PRSTNS/10,000)	8.2	
PHARMACEUTICAL ED RATE: FEMALE (PRSTNS/10,000)	15.6	
ILLICIT DRUGS		
ILLICIT AMBULANCE RATE: TOTAL (ATTS./10,000)	10.2	
ILLICIT AMBULANCE RATE: 15-24YRS (ATTS./10,000)	26.5	
ILLICIT AMBULANCE RATE: MALE (ATTS./10,000)	14.6	
ILLICIT AMBULANCE RATE: FEMALE (ATTS./10,000)	5.9	
ILLICIT ADIS RATE: TOTAL (TX EOCS PER 10,000)	20.8	
ILLICIT ADIS RATE: 15-24 YRS (TX EOCS PER 10,000)	55.4	
ILLICIT ADIS RATE: MALE (TX EOCS PER 10,000)	30	
ILLICIT ADIS RATE: FEMALE (TX EOCS PER 10,000)	12.2	
ILLICIT ED RATE: TOTAL (PRSTNS/10,000)	2.2	
ILLICIT ED RATE: 15-24 YRS (PRSTNS/10,000)	5.4	
ILLICIT ED RATE: MALE (PRSTNS/10,000)	2.4	
ILLICIT ED RATE: FEMALE (PRSTNS/10,000)	2.1	
SERVICE USE & ACCESS		
DRUG USE & POSSESSION OFFENCES PER 1000 POPULATION	4.1	3.8
DRUG AND ALCOHOL CLIENTS PER 1000	5.8	5.8

Comparisons & context:

* Red text – shows where the figure is in the top 3 highest rates for all 14 LGAs in the North & West catchments.

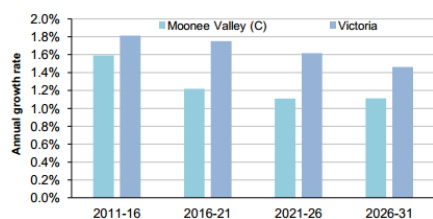
* Orange text – shows that the rate is higher than the state average

Mental health in Moonee Valley

	MOONEE VALLEY	VICTORIA
PEOPLE REPORTING HIGH/VERY HIGH LEVELS OF PSYCHOLOGICAL DISTRESS (RANK)	10.1% (41)	11%
LIFETIME PREVALENCE OF ANXIETY AND DEPRESSION M/ F	12.1/ 20.5	14.6/25.0
SERVICE USE & ACCESS		
NUMBER OF REGISTERED MENTAL HEALTH CLIENTS	1,234	
REGISTERED MENTAL HEALTH CLIENTS PER 1000 POP (RANK)	10.9 (49)	11.1
MHCSS CLIENTS 2014	167	
MHCSS CLIENTS PER 1000 POPULATION	2.18	
PROPORTION OF PEOPLE WHO SOUGHT PROFESSIONAL HELP FOR A MENTAL HEALTH PROBLEM	10.40%	12.40%
YOUNG PEOPLE		
CHILDREN WITH EMOTIONAL/BEHAVIOURAL PROBLEMS AT SCHOOL AGE	2.5% (55)	4.3%
ADOLESCENTS WHO REPORT BEING RECENTLY BULLIED	16.5% (53)	17.9%

Population projections

Average annual population growth rate 2011 to 2031



This graph shows lower than average population growth projections for the City of Moonee Valley to 2031.

Aligned planning priorities



The **City of Moonee Valley Health and Well Being Plan** has five key themes. Its 'people' theme includes a strategic objective to promote positive mental health with a focus on youth and providing support. It also includes a commitment to identify emerging issues, in which a focus on young people and risk taking behaviour such as drug and alcohol use is identified. The plan also identifies that smoking amongst adolescents is the highest level in metropolitan municipalities for 15-17 year olds.



The **Inner North West Melbourne Medicare Local Comprehensive Needs Assessment 2014-2017** identifies 5 key priorities: 1) the need to coordinate care across service system 2) prevention and management of chronic disease 3) health literacy 4) mental and emotional health and wellbeing and 5) alcohol and other drugs. Both the mental health and AOD response include stakeholder consultation/forums in early 2015 and discussion papers to further identify issues.

The mental health response also aims to increase Access to Allied Psychological Services (ATAPS) and counselling services (including for young people), the PACER response, an after-hours nurse outreach program and a GP mental health education series. The AOD response includes support for the pharmacotherapy network.



The **Inner North West Primary Care Partnership** has a vision of strong partnerships, equitable outcomes and healthy communities. It has two strategic priorities 1) prevention of violence against women (inclusive of children and families) and 2) improving system capacity to increase prevention and support people from priority populations with chronic disease and co-morbidities. Health promotion priorities are identified as mental health, physical activity, harm from addiction/dependence (alcohol, tobacco, gambling and other drugs); health impacts of climate change; access to nutritious food, prevention of family violence and reducing health inequalities (including for Aboriginal people)