

# Yarra

## Inner North Melbourne



**Area (2011):** 20km<sup>2</sup>

**Population density (2011):** 4,046.3 persons/km

**Major centres:** Richmond, Collingwood, Fitzroy

The city of Yarra is located in inner-east Melbourne. Per annum population growth has been around average but is projected to increase to 2022. Almost half the population are adults aged 25-44 years. Cultural diversity in Yarra is similar to the Victorian average. The percentage of social housing is the highest in the state.

Yarra is an area of significant concern in the AOD statistics. It has the third highest rate of drug crime and the fourth highest rate of overall crime across the whole of Victoria. The area consistently scores in the top 3 highest rates across our North & West catchments for almost all indicators relating to alcohol and illicit drugs, and for many of those relating to pharmaceuticals. Yarra has our highest rate of registered Drug and Alcohol clients (11.1 per 1000) as well as the second highest rate of registered mental health clients across our North & West catchment areas.

Typical measures of geographical access are good, 100% of the population live near to public transport, and there is a high distribution of GP and allied health and other community services.

Yarra residents are the highest seekers of assistance for professional help for a mental health problem and males have a high life time prevalence of depression and anxiety (24.1%) compared to the Victorian average of 14.6%.

## Population

	YARRA	VICTORIA
<b>TOTAL POPULATION</b>	80,593	
<b>ABORIGINAL &amp; TORRES STRAIT ISLANDER PEOPLES</b>	0.5%	0.8%
<b>DIVERSITY</b>		
<b>PERCENT BORN OVERSEAS</b>	31.3%	27.7%
<b>PERCENT BORN IN NON ENGLISH SPEAKING COUNTRY</b>	21.7%	20.9%
<b>PERCENT SPEAKING LANGUAGE OTHER THAN ENGLISH AT HOME</b>	25.2%	24.2%
<b>PERCENT WITH LOW ENGLISH PROFICIENCY</b>	6.7%	4.0%
<b>NEW SETTLER ARRIVALS PER 100,000</b>	1,402.1	1,415.1
<b>SOCIO-ECONOMIC INDICATORS</b>		
<b>UNEMPLOYMENT RATE</b>	6.9%	5.8%
<b>INDEX RELATIVE SOCIO-ECONOMIC DISADVANTAGE</b>	1019	1000
<b>MEDIAN HOUSEHOLD INCOME</b>	\$1,680	\$1,216
<b>MORTGAGE STRESS / RENTAL STRESS</b>	4.7% / 15.5%	11.4% / 25.1%
<b>GAMING MACHINE LOSSES PER HEAD OF ADULT POPULATION</b>	\$409.00	\$549.50
<b>PERCENT OF POPULATION WITH FOOD INSECURITY</b>	2.7%	4.6%
<b>FAMILY INCIDENTS (RATE PER 1000 POPULATION)</b>	8.7	10.8
<b>TOTAL OFFENCES (RATE PER 1000 POPULATION)</b>	123.0	72.2
<b>SUBSTANTIATED CHILD ABUSE (RATE PER 1000 POPULATION)</b>	7.7	6.7
<b>CHILD PROTECTION ORDERS (RATE PER 1000 POPULATION)</b>	9.3	5.2
<b>CHILDREN IN OUT OF HOME CARE (RATE PER 1000 POPULATION)</b>	2.8	4.6
<b>COMMUNITY</b>		
<b>PEOPLE WHO FEEL SAFE WALKING ALONE AFTER DARK</b>	73.8%	70.3%
<b>PERCENT OF POPULATION NEAR TO PUBLIC TRANSPORT</b>	100.0%	74.2%
<b>PEOPLE WHO BELIEVE THERE ARE GOOD FACILITIES AND SERVICES IN THE LGA</b>	90.2%	85.2%
<b>HEALTH &amp; WELLBEING</b>		
<b>PERSONS REPORTING FAIR OR POOR HEALTH</b>	14.8%	15.9%
<b>GENERAL PRACTICES PER 1000</b>	1.8	1.2
<b>PHARMACIES PER 1000</b>	0.2	0.2

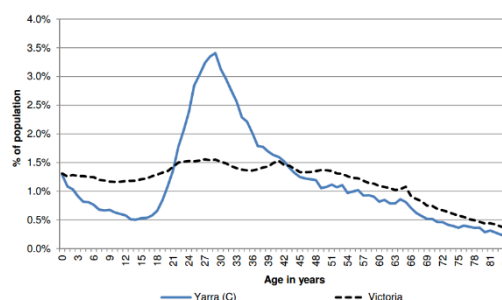
### Top 5 overseas countries of birth:

- UK (4.8%)
- Vietnam (3.9%)
- NZ (3.3%)
- Greece (1.9%)
- China (1.7%)

### Top 5 languages other than English:

- Vietnamese (4.8%)
- Greek (3.7%)
- Italian (2.5%)
- Cantonese (1.7%)
- Mandarin (1.7%)

### Age distribution (2012)



## Alcohol, tobacco & other drugs in Yarra

	YARRA	VICTORIA
PERCENTAGE PERSONS WHO ARE CURRENT SMOKERS (18+)	14.7%	15.7%
18+ FEMALES CURRENT SMOKERS	12.7%	12.9%
18+ MALES CURRENT SMOKERS	16.4%	18.5%
<b>ALCOHOL</b>		
PERCENTAGE PERSONS AT RISK OF SHORT TERM HARM FROM ALCOHOL CONSUMPTION	16.0%	10.2%
PURCHASED ALCOHOL IN THE LAST 7 DAYS	48.2%	36.3%
7 DAY \$ SPEND ON PACKAGED LIQUOR (OF THOSE PURCHASING)	\$49.0	\$45.00
7 DAY \$ SPEND AT A LICENSED PREMISES (OF THOSE PURCHASING)	\$48.0	\$45.00
ALCOHOL AMBULANCE RATE: TOTAL (ATTENDENCES PER 10,000)	69.2	
ALCOHOL AMBULANCE RATE: 15-24 YRS (ATTS./10,000)	131.1	
ALCOHOL AMBULANCE RATE: MALE (ATTS./10,000)	94.1	
ALCOHOL AMBULANCE RATE: FEMALE (ATTS./10,000)	44.9	
ALCOHOL ADIS RATE: TOTAL (TX EOCS PER 10,000)	33.3	
ALCOHOL ADIS RATE: 15-24 YRS (TX EOCS PER 10,000)	31.3	
ALCOHOL ADIS RATE: MALE (TX EOCS PER 10,000)	44.7	
ALCOHOL ADIS RATE: FEMALE (TX EOCS PER 10,000)	22.1	
ALCOHOL ED RATE: TOTAL (PRESENTATIONS PER 10,000)	30.2	
ALCOHOL ED RATE: 15-24 YRS (PRSTNS/10,000)	29.4	
ALCOHOL ED RATE: MALE (PRSTNS/10,000)	42.8	
ALCOHOL ED RATE: FEMALE (PRSTNS/10,000)	18.0	
SERIOUS ROAD INJURIES DURING HIGH ALCOHOL HOURS: TOTAL (PER 10,000)	5.7	
SERIOUS ROAD INJURIES DURING HAH: 15-24 YRS (PER 10,000)	8.4	
SERIOUS ROAD INJURIES DURING HAH: MALE (PER 10,000)	8.6	
SERIOUS ROAD INJURIES DURING HAH: FEMALE (PER 10,000)	2.7	
ALCOHOL ASSAULT HAH: TOTAL (PER 10,000)	23.3	
ALCOHOL ASSAULT HAH: 18-24 YRS (PER 10,000)	60.6	
ALCOHOL ASSAULT HAH: MALE (PER 10,000)	31.3	
ALCOHOL ASSAULT HAH: FEMALE (PER 10,000)	15.3	
ALCOHOL FAMILY VIOLENCE RATE: TOTAL (DEFINITE INCIDENTS PER 10,000)	17.9	
ALCOHOL FAMILY VIOLENCE RATE: 18-24 YRS (DEFINITE INCIDENTS PER 10,000)	31.2	
ALCOHOL FAMILY VIOLENCE RATE: MALE (DEFINITE INCIDENTS PER 10,000)	9.3	
ALCOHOL FAMILY VIOLENCE RATE: FEMALE (DEFINITE INCIDENTS PER 10,000)	26.3	
<b>YOUNG PEOPLE</b>		
PERCENT 15-17 YEAR OLDS WHO DRANK ALCOHOL IN THE PAST 30 DAYS	66.6%	24.7%
PERCENT 15-17 YEAR OLDS WHO SMOKED IN THE PAST 30 DAYS	27.1%	12.9%
PERCENT 15-17 YEAR OLDS WHO EVER - USED MARIJUANA	43.1%	10.9%
PERCENT 15-17 YEAR OLDS WHO EVER - SNIFFED GLUE OR CHROMED	5.0%	7.8%
PERCENT 15-17 YEAR OLDS WHO EVER - USED OTHER ILLEGAL DRUGS	19.5%	3.0%
<b>PHARMACEUTICALS</b>		
PHARMACEUTICAL AMBULANCE RATE: TOTAL (ATTENDANCES PER 10,000)	40.5	
PHARMACEUTICAL AMBULANCE RATE: 15-24 YRS (ATTS./10,000)	15.8	
PHARMACEUTICAL AMBULANCE RATE: MALE (ATTS./10,000)	43.9	
PHARMACEUTICAL AMBULANCE RATE: FEMALE (ATTS./10,000)	37.2	
PHARMACEUTICAL ADIS RATE: TOTAL (TX EOCS PER 10,000)	4.2	
PHARMACEUTICAL ADIS RATE: 15-24 YRS (TX EOCS PER 10,000)	n/a	
PHARMACEUTICAL ADIS RATE: MALE (TX EOCS PER 10,000)	5	
PHARMACEUTICAL ADIS RATE: FEMALE (TX EOCS PER 10,000)	3.4	
PHARMACEUTICAL ED PRESENTATION RATE: TOTAL (PRESENTATIONS PER 10,000)	12.8	
PHARMACEUTICAL ED RATE: 15-24YRS (PRSTNS/10,000)	23.1	
PHARMACEUTICAL ED RATE: MALE (PRSTNS/10,000)	8.4	
PHARMACEUTICAL ED RATE: FEMALE (PRSTNS/10,000)	17	
<b>ILLICIT DRUGS</b>		
ILLICIT AMBULANCE RATE: TOTAL (ATTS./10,000)	55.9	
ILLICIT AMBULANCE RATE: 15-24YRS (ATTS./10,000)	55.8	
ILLICIT AMBULANCE RATE: MALE (ATTS./10,000)	80.6	
ILLICIT AMBULANCE RATE: FEMALE (ATTS./10,000)	31.8	
ILLICIT ADIS RATE: TOTAL (TX EOCS PER 10,000)	57.9	
ILLICIT ADIS RATE: 15-24 YRS (TX EOCS PER 10,000)	114.5	
ILLICIT ADIS RATE: MALE (TX EOCS PER 10,000)	86.1	
ILLICIT ADIS RATE: FEMALE (TX EOCS PER 10,000)	30.8	
ILLICIT ED RATE: TOTAL (PRSTNS/10,000)	4.6	
ILLICIT ED RATE: 15-24 YRS (PRSTNS/10,000)	n.a	
ILLICIT ED RATE: MALE (PRSTNS/10,000)	7.1	
ILLICIT ED RATE: FEMALE (PRSTNS/10,000)	2.2	
<b>SERVICE USE &amp; ACCESS</b>		
DRUG USE & POSSESSION OFFENCES PER 1000 POPULATION	9.4	3.8
DRUG AND ALCOHOL CLIENTS PER 1000	11.1	5.8

### Comparisons & context:

\*Red text – shows where the figure is in the top 3 most concerning rates for all 14 LGAs in the North & West catchments.

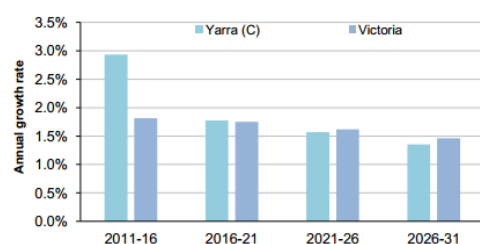
\* Orange text – shows that the rate is 'worse' than the state average

## Mental health in Yarra

	YARRA	VICTORIA
PEOPLE REPORTING HIGH/VERY HIGH LEVELS OF PSYCHOLOGICAL DISTRESS (RANK)	7.8% (60)	11.1%
LIFETIME PREVALENCE OF ANXIETY AND DEPRESSION M/ F	24.1/ 19.1	14.6/25.0
<b>SERVICE USE &amp; ACCESS</b>		
NUMBER OF REGISTERED MENTAL HEALTH CLIENTS	1032	
REGISTERED MENTAL HEALTH CLIENTS PER 1000 POP (RANK)	12.8 (37)	11.1
MHCSS CLIENTS 2014	132	
MHCSS CLIENTS PER 1000 POPULATION	2.09	
PROPORTION OF PEOPLE WHO SOUGHT PROFESSIONAL HELP FOR A MENTAL HEALTH PROBLEM	16.40%	12.40%
<b>YOUNG PEOPLE</b>		
CHILDREN WITH EMOTIONAL/BEHAVIOURAL PROBLEMS AT SCHOOL AGE	2.1% (60)	4.3%
ADOLESCENTS WHO REPORT BEING RECENTLY BULLIED	12.5% (76)	17.9%

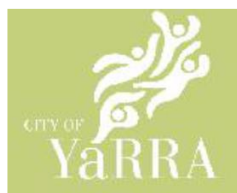
## Population projections

Average annual population growth rate 2011 to 2031



Although above average over the next few years, the projected population growth rate for the City of Yarra decreases to align with the state average to 2031.

## Aligned planning priorities



The vision of the **City of Yarra Health and Wellbeing Plan 2013-2017** is: "Helping communities flourish through health promoting environments". Priority populations include people living with long term disadvantage, Indigenous Australians, people living with a disability, people from diverse cultural backgrounds, and women. Due to the significant community issues in Yarra, people who inject drugs, and people experiencing homelessness and housing insecurity are also given particular consideration. There are four priority areas: health promoting environments (including mental health and wellbeing); community safety; reducing the harm from alcohol, tobacco and other drugs; and closing the gap on indigenous health.

The **City of Yarra Safer Yarra (2011-2014) Plan** sets out strategies to respond to safety issues including illegal drug use. Strategies are largely based on managing amenity issues such as discarded syringes and working with police and other service providers.



The **Inner North West Melbourne Medicare Local Comprehensive Needs Assessment 2014-2017** identifies 5 key priorities – 1) the need to coordinate care across service system 2) prevention and management of chronic disease 3) health literacy 4) mental and emotional health and wellbeing and 5) alcohol and other drugs. Both the mental health and AoD response include stakeholder consultation/ forums in early 2015 and discussion papers to further identify issues. The mental health response also aims to increase Access to Allied Psychological Services (ATAPS) and counselling services (including for young people), the PACER response, an after-hours nurse outreach program and a GP mental health education series. The AoD response includes support for the pharmacotherapy network.



The **Inner North West Primary Care Partnership** has a vision of strong partnerships, equitable outcomes and healthy communities. It has two strategic priorities 1) prevention of violence against women (inclusive of children and families) and 2) improving system capacity to increase prevention and support people from priority populations with chronic disease and co-morbidities. Health promotion priorities are identified as mental health, physical activity, harm from addiction/dependence (alcohol, tobacco, gambling and other drugs); health impacts of climate change; access to nutritious food, prevention of family violence and reducing health inequalities (including for Aboriginal people)