

Darebin

North Melbourne



Area (2011): 54km²
Population density (2011): 2,671.8 persons/ km²
Major centres: Northcote, Preston, Reservoir

Darebin is a small LGA to the north east of Melbourne's CBD with a low projected growth rate. Residents aged 25-44 are overrepresented, and the area is culturally diverse with 41% of residents speaking a language other than English at home. It has our third highest rate of low English proficiency at 8.3%.

Darebin has the North & West's highest proportion of people identifying as Aboriginal and Torres Strait Islander at 1.0% (compared to the state average of 0.8%).

Unemployment rate is higher than average, as are the percentages of low income individuals and households. The proportion of social housing dwellings is among the highest in the state. Smoking rates are above average, especially for males (28% compared to 18.5% in the state), and ambulance attendances for alcohol related call outs are high with the total attendances per 10,000 and the attendances for females per 10,000 both ranking among the top three highest across all four of our catchments. Darebin is the seventh most likely LGA to have residents reporting fair or poor health.

Access to public transport is very good and it has one of the lowest rates of car ownership in the State, However, perceptions of feeling safe while walking alone are low.

Population

	DAREBIN	VICTORIA
TOTAL POPULATION	144,086	
ABORIGINAL & TORRES STRAIT ISLANDER PEOPLES	1.0%	0.8%
DIVERSITY		
PERCENT BORN OVERSEAS	36.0%	27.7%
PERCENT BORN IN NON ENGLISH SPEAKING COUNTRY	31.3%	20.9%
PERCENT SPEAKING LANGUAGE OTHER THAN ENGLISH AT HOME	41.0%	24.2%
PERCENT WITH LOW ENGLISH PROFICIENCY	8.3%	4.0%
NEW SETTLER ARRIVALS PER 100,000	1,753.8	1,415.1
SOCIO-ECONOMIC INDICATORS		
UNEMPLOYMENT RATE	6.5%	5.8%
INDEX RELATIVE SOCIO ECONOMIC DISADVANTAGE	990	1000
MEDIAN HOUSEHOLD INCOME	\$1,178	\$1,216
MORTGAGE STRESS / RENTAL STRESS	10.1% / 24.7%	11.4% / 25.1%
GAMING MACHINE LOSSES PER HEAD OF ADULT POPULATION	\$694.9	\$549.50
PERCENT OF POPULATION WITH FOOD INSECURITY	3.6%	4.6%
FAMILY INCIDENTS (RATE PER 1000 POPULATION)	10.6	10.8
TOTAL OFFENCES (RATE PER 1000 POPULATION)	75.5	72.2
SUBSTANTIATED CHILD ABUSE (RATE PER 1000 POPULATION)	6.8	6.7
CHILD PROTECTION ORDERS (RATE PER 1000 POPULATION)	6.8	5.2
CHILDREN IN OUT OF HOME CARE (RATE PER 1000 POPULATION)	4.3	4.6
COMMUNITY		
PEOPLE WHO FEEL SAFE WALKING ALONE AFTER DARK	60.9%	70.3%
PERCENT OF POPULATION NEAR TO PUBLIC TRANSPORT	99.7%	74.2%
PEOPLE WHO BELIEVE THERE ARE GOOD FACILITIES AND SERVICES IN THE LGA	89.9%	85.2%
HEALTH & WELLBEING		
PERSONS REPORTING FAIR OR POOR HEALTH	20.8%	15.9%
GENERAL PRACTICES PER 1000	1.0	1.2
PHARMACIES PER 1000	0.2	0.2

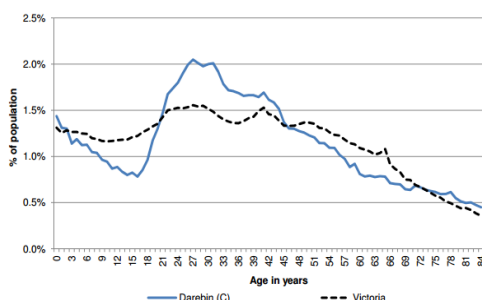
Top 5 overseas countries of birth:

- Italy (5.6%)
- Greece (3.9%)
- India (3.5%)
- China (3.4%)
- UK (2.5%)

Top 5 languages other than English:

- Italian (8.8%)
- Greek (7.8%)
- Arabic (3.3%)
- Mandarin (3.2%)
- Vietnamese (2.3%)

Age distribution (2012)



Alcohol, tobacco & other drugs in Darebin

	DAREBIN	VICTORIA
PERCENTAGE PERSONS WHO ARE CURRENT SMOKERS (18+)	21.9%	15.7%
18+ FEMALES CURRENT SMOKERS	16.2%	12.9%
18+ MALES CURRENT SMOKERS	28.0%	18.5%
ALCOHOL		
PERCENTAGE PERSONS AT RISK OF SHORT TERM HARM FROM ALCOHOL CONSUMPTION	11.2%	10.2%
PURCHASED ALCOHOL IN THE LAST 7 DAYS	35.1%	36.3%
7 DAY \$ SPEND ON PACKAGED LIQUOR (OF THOSE PURCHASING)	\$48.0	\$45.00
7 DAY \$ SPEND AT A LICENSED PREMISES (OF THOSE PURCHASING)	\$33.0	\$45.00
ALCOHOL AMBULANCE RATE: TOTAL (ATTENDENCES PER 10,000)	35.7	
ALCOHOL AMBULANCE RATE: 15-24 YRS (ATTS./10,000)	39.4	
ALCOHOL AMBULANCE RATE: MALE (ATTS./10,000)	47.7	
ALCOHOL AMBULANCE RATE: FEMALE (ATTS./10,000)	24.2	
ALCOHOL ADIS RATE: TOTAL (TX EOCS PER 10,000)	18.3	
ALCOHOL ADIS RATE: 15-24 YRS (TX EOCS PER 10,000)	19.6	
ALCOHOL ADIS RATE: MALE (TX EOCS PER 10,000)	26.3	
ALCOHOL ADIS RATE: FEMALE (TX EOCS PER 10,000)	10.7	
ALCOHOL ED RATE: TOTAL (PRESENTATIONS PER 10,000)	14.2	
ALCOHOL ED RATE: 15-24 YRS (PRSTNS/10,000)	18.8	
ALCOHOL ED RATE: MALE (PRSTNS/10,000)	20.5	
ALCOHOL ED RATE: FEMALE (PRSTNS/10,000)	8.3	
SERIOUS ROAD INJURIES DURING HIGH ALCOHOL HOURS: TOTAL (PER 10,000)	2.9	
SERIOUS ROAD INJURIES DURING HAH: 15-24 YRS (PER 10,000)	2.2	
SERIOUS ROAD INJURIES DURING HAH: MALE (PER 10,000)	3.7	
SERIOUS ROAD INJURIES DURING HAH: FEMALE (PER 10,000)	2.2	
ALCOHOL ASSAULT HAH: TOTAL (PER 10,000)	11.2	
ALCOHOL ASSAULT HAH: 18-24 YRS (PER 10,000)	25.1	
ALCOHOL ASSAULT HAH: MALE (PER 10,000)	13.9	
ALCOHOL ASSAULT HAH: FEMALE (PER 10,000)	8	
ALCOHOL FAMILY VIOLENCE RATE: TOTAL (DEFINITE INCIDENTS PER 10,000)	18.8	
ALCOHOL FAMILY VIOLENCE RATE: 18-24 YRS (DEFINITE INCIDENTS PER 10,000)	24.7	
ALCOHOL FAMILY VIOLENCE RATE: MALE (DEFINITE INCIDENTS PER 10,000)	10.3	
ALCOHOL FAMILY VIOLENCE RATE: FEMALE (DEFINITE INCIDENTS PER 10,000)	26.7	
YOUNG PEOPLE		
PERCENT 15-17 YEAR OLDS WHO DRANK ALCOHOL IN THE PAST 30 DAYS	52.9%	24.7%
PERCENT 15-17 YEAR OLDS WHO SMOKED IN THE PAST 30 DAYS	14.2%	12.9%
PERCENT 15-17 YEAR OLDS WHO EVER - USED MARIJUANA	15.4%	10.9%
PERCENT 15-17 YEAR OLDS WHO EVER - SNIFFED GLUE OR CHROMED	9.8%	7.8%
PERCENT 15-17 YEAR OLDS WHO EVER - USED OTHER ILLEGAL DRUGS	2.8%	3.0%
PHARMACEUTICALS		
PHARMACEUTICAL AMBULANCE RATE: TOTAL (ATTENDANCES PER 10,000)	22.9	
PHARMACEUTICAL AMBULANCE RATE: 15-24 YRS (ATTS./10,000)	14.9	
PHARMACEUTICAL AMBULANCE RATE: MALE (ATTS./10,000)	22.7	
PHARMACEUTICAL AMBULANCE RATE: FEMALE (ATTS./10,000)	23.1	
PHARMACEUTICAL ADIS RATE: TOTAL (TX EOCS PER 10,000)	1.7	
PHARMACEUTICAL ADIS RATE: 15-24 YRS (TX EOCS PER 10,000)	n/a	
PHARMACEUTICAL ADIS RATE: MALE (TX EOCS PER 10,000)	2.1	
PHARMACEUTICAL ADIS RATE: FEMALE (TX EOCS PER 10,000)	1.3	
PHARMACEUTICAL ED PRESENTATION RATE: TOTAL (PRESENTATIONS PER 10,000)	9.6	
PHARMACEUTICAL ED RATE: 15-24YRS (PRSTNS/10,000)	16	
PHARMACEUTICAL ED RATE: MALE (PRSTNS/10,000)	5.5	
PHARMACEUTICAL ED RATE: FEMALE (PRSTNS/10,000)	13.4	
ILLICIT DRUGS		
ILLICIT AMBULANCE RATE: TOTAL (ATTS./10,000)	13.6	
ILLICIT AMBULANCE RATE: 15-24YRS (ATTS./10,000)	27	
ILLICIT AMBULANCE RATE: MALE (ATTS./10,000)	18.8	
ILLICIT AMBULANCE RATE: FEMALE (ATTS./10,000)	8.5	
ILLICIT ADIS RATE: TOTAL (TX EOCS PER 10,000)	27.4	
ILLICIT ADIS RATE: 15-24 YRS (TX EOCS PER 10,000)	55.1	
ILLICIT ADIS RATE: MALE (TX EOCS PER 10,000)	39.5	
ILLICIT ADIS RATE: FEMALE (TX EOCS PER 10,000)	15.8	
ILLICIT ED RATE: TOTAL (PRSTNS/10,000)	2.7	
ILLICIT ED RATE: 15-24 YRS (PRSTNS/10,000)	2.8	
ILLICIT ED RATE: MALE (PRSTNS/10,000)	3.3	
ILLICIT ED RATE: FEMALE (PRSTNS/10,000)	2.2	
SERVICE USE & ACCESS		
DRUG USE & POSSESSION OFFENCES PER 1000 POPULATION	3.9	3.8
DRUG AND ALCOHOL CLIENTS PER 1000	5.2	5.8

Comparisons & context:

*Red text – shows where the figure is in the top 3 highest rates for all 14 LGAs in the North & West catchments.

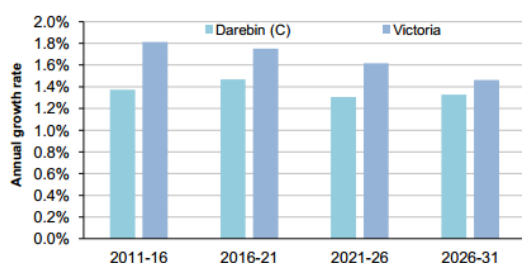
* Orange text – shows that the rate is higher than the state average

Mental health in Darebin

	DAREBIN	VICTORIA
PEOPLE REPORTING HIGH/VERY HIGH LEVELS OF PSYCHOLOGICAL DISTRESS (RANK)	11.7% (26)	11.10%
LIFETIME PREVALENCE OF ANXIETY AND DEPRESSION M/ F	16.8/ 24.6	14.6/25.0
SERVICE USE & ACCESS		
NUMBER OF REGISTERED MENTAL HEALTH CLIENTS	1787	
REGISTERED MENTAL HEALTH CLIENTS PER 1000 POP (RANK)	12.4 (40)	11.1
MHCSS CLIENTS 2014	271	
MHCSS CLIENTS 2014 PER 1000 POPULATION	2.71	
PROPORTION OF PEOPLE WHO SOUGHT PROFESSIONAL HELP FOR A MENTAL HEALTH PROBLEM	13.7%	12.4%
YOUNG PEOPLE		
CHILDREN WITH EMOTIONAL/BEHAVIOURAL PROBLEMS AT SCHOOL AGE (RANK)	2.6% (53)	4.3%
ADOLESCENTS WHO REPORT BEING RECENTLY BULLIED (RANK)	15.7% (58)	17.9%

Population projections

Average annual population growth rate 2011 to 2031



Population projections for Darebin are slightly below the state average to 2031.

Aligned planning priorities



The **City of Darebin Health and Wellbeing Plan** details groups of people who are considered at risk of exclusion and whose needs are considered in the plan, including people with a mental illness. It has five main goals which target: early years; lifelong education and learning; freedom from discrimination and violence as a basis for emotional and social wellbeing; safe and accessible places; and to protect and promote physical health (including reducing smoking and limiting harm from alcohol and other drugs).



The **Northern Melbourne Medicare Local** has a focus on systems reform, supporting planning, integrations and coordination of primary health care services across four key areas – including mental health and service access and quality. Under mental health NMML will lead planning; integration and coordination of primary health care services for people with a mental illness, involving workshops and preparation of paper. Under service access and quality, NMML will support the active integration of after-hours pilot of ReGen AoD service and NPACER program and funding to extend a joint police and mental health clinical project to provide a dual secondary response.



The **North East Primary Care Partnership (NEPCP) Strategic Plan** identifies people with a mental illness as one of its four target groups. Its focus is on collaboration, integration and innovation. The NEPCP auspiced the Physical Health Matters Too project to improve physical health screening for people with a mental illness.