

# Brimbank

## North West Melbourne



**Area (2011):** 123km<sup>2</sup>

**Population density (2011):** 1,551.8 persons/km

**Major centres:** Sunshine, St Albans, Keilor

Located about 20km from Melbourne's CBD, Brimbank is a city of socioeconomic extremes.

It is our most culturally diverse LGA across the 14 in the North & West catchments with the second highest proportion of people born in a non-English speaking country in Victoria. 15% of people speak Vietnamese at home, and 13% have low English proficiency.

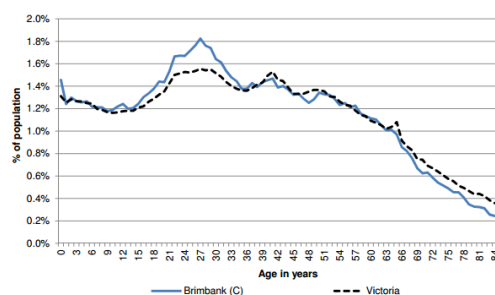
Of the 14 LGAs in our 4 catchments, Brimbank has the highest level of disadvantage, highest rate of gaming machine losses, lowest percentage of people who feel safe walking alone on the street at dark, poorest self-reported health status, lowest percentage of people who think there are good services and facilities in the LGA (77.7%, equal with Maribyrnong, compared to state average of 85.2%). There is a high rate of developmental vulnerability in children, and mortgage and rental stress are among the highest in the state. It has also has comparatively lower number of general practitioners per 1000 population but a high level of attendance.

There is a high incidence of alcohol-related serious road injuries and young peoples' AOD risk taking behaviours, and above average rates of both drug offences and total offences.

## Population

	BRIMBANK	VICTORIA
<b>TOTAL POPULATION</b>	193,668	
<b>ABORIGINAL &amp; TORRES STRAIT ISLANDER PEOPLES</b>	0.5%	0.8%
<b>DIVERSITY</b>		
<b>PERCENT BORN OVERSEAS</b>	49.6%	27.7%
<b>PERCENT BORN IN NON ENGLISH SPEAKING COUNTRY</b>	46.4%	20.9%
<b>PERCENT SPEAKING LANGUAGE OTHER THAN ENGLISH AT HOME</b>	59.7%	24.2%
<b>PERCENT WITH LOW ENGLISH PROFICIENCY</b>	13.4%	4.0%
<b>NEW SETTLER ARRIVALS PER 100,000</b>	1,585.7	1,415.1
<b>SOCIO-ECONOMIC INDICATORS</b>		
<b>UNEMPLOYMENT RATE</b>	8.6%	5.8%
<b>INDEX RELATIVE SOCIO ECONOMIC DISADVANTAGE</b>	926	1000
<b>MEDIAN HOUSEHOLD INCOME</b>	\$1,106	\$1,216
<b>MORTGAGE STRESS / RENTAL STRESS</b>	18.0% / 30.6%	11.4% / 25.1%
<b>GAMING MACHINE LOSSES PER HEAD OF ADULT POPULATION</b>	\$903.00	\$549.50
<b>PERCENT OF POPULATION WITH FOOD INSECURITY</b>	5.4%	4.6%
<b>FAMILY INCIDENTS (RATE PER 1000 POPULATION)</b>	9.7	10.8
<b>TOTAL OFFENCES (RATE PER 1000 POPULATION)</b>	90.4	72.2
<b>SUBSTANTIATED CHILD ABUSE (RATE PER 1000 POPULATION)</b>	6.7	6.7
<b>CHILD PROTECTION ORDERS (RATE PER 1000 POPULATION)</b>	5.3	5.2
<b>CHILDREN IN OUT OF HOME CARE (RATE PER 1000 POPULATION)</b>	3.5	4.6
<b>COMMUNITY</b>		
<b>PEOPLE WHO FEEL SAFE WALKING ALONE AFTER DARK</b>	45.2%	70.3%
<b>PERCENT OF POPULATION NEAR TO PUBLIC TRANSPORT</b>	84.3%	74.2%
<b>PEOPLE WHO BELIEVE THERE ARE GOOD FACILITIES AND SERVICES IN THE LGA</b>	77.7%	85.2%
<b>HEALTH &amp; WELLBEING</b>		
<b>PEOPLE REPORTING HIGH/V. HIGH LEVELS OF PSYCHOLOGICAL DISTRESS</b>	14.4%	11.1%
<b>PERSONS REPORTING FAIR OR POOR HEALTH</b>	23.8%	15.9%
<b>CHILDREN WITH EMOTIONAL/BEHAVIOURAL PROBLEMS AT SCHOOL AGE</b>	3.7%	4.3%
<b>ADOLESCENTS WHO REPORT BEING RECENTLY BULLIED</b>	17.5%	17.9%
<b>GENERAL PRACTICES PER 1000</b>	0.8	1.2
<b>PHARMACIES PER 1000</b>	0.2	0.2

## Age distribution (2012)



### Top 5 overseas countries of birth:

- Vietnam (10.6%)
- India (4.6%)
- Malta (3.2%)
- Philippines (3.1%)
- Italy (2.1%)

### Top 5 languages other than English:

- Vietnamese (15.1%)
- Maltese (3.5%)
- Italian (3.4%)
- Greek (3.4%)
- Macedn. (3.1%)

## Alcohol, tobacco & other drugs in Brimbank

	BRIMBANK	VICTORIA
PERCENTAGE PERSONS WHO ARE CURRENT SMOKERS (18+)	14.3%	15.7%
18+ FEMALES CURRENT SMOKERS	9.5%	12.9%
18+ MALES CURRENT SMOKERS	19.1%	18.5%
<b>ALCOHOL</b>		
PERCENTAGE PERSONS AT RISK OF SHORT TERM HARM FROM ALCOHOL CONSUMPTION	4.7%	10.2%
PURCHASED ALCOHOL IN THE LAST 7 DAYS	24.3%	36.3%
7 DAY \$ SPEND ON PACKAGED LIQUOR (OF THOSE PURCHASING)	\$37.0	\$45.00
7 DAY \$ SPEND AT A LICENSED PREMISES (OF THOSE PURCHASING)	\$52.0	\$45.00
ALCOHOL AMBULANCE RATE: TOTAL (ATTENDENCES PER 10,000)	25.1	
ALCOHOL AMBULANCE RATE: 15-24 YRS (ATTS./10,000)	35.0	
ALCOHOL AMBULANCE RATE: MALE (ATTS./10,000)	33.3	
ALCOHOL AMBULANCE RATE: FEMALE (ATTS./10,000)	16.7	
ALCOHOL ADIS RATE: TOTAL (TX EOCS PER 10,000)	16.8	
ALCOHOL ADIS RATE: 15-24 YRS (TX EOCS PER 10,000)	22.5	
ALCOHOL ADIS RATE: MALE (TX EOCS PER 10,000)	24.2	
ALCOHOL ADIS RATE: FEMALE (TX EOCS PER 10,000)	9.1	
ALCOHOL ED RATE: TOTAL (PRESENTATIONS PER 10,000)	12.1	
ALCOHOL ED RATE: 15-24 YRS (PRSTNS/10,000)	22.9	
ALCOHOL ED RATE: MALE (PRSTNS/10,000)	14.9	
ALCOHOL ED RATE: FEMALE (PRSTNS/10,000)	9.3	
SERIOUS ROAD INJURIES DURING HIGH ALCOHOL HOURS: TOTAL (PER 10,000)	5.1	
SERIOUS ROAD INJURIES DURING HAH: 15-24 YRS (PER 10,000)	8.8	
SERIOUS ROAD INJURIES DURING HAH: MALE (PER 10,000)	6.0	
SERIOUS ROAD INJURIES DURING HAH: FEMALE (PER 10,000)	3.9	
ALCOHOL ASSAULT HAH: TOTAL (PER 10,000)	10.5	
ALCOHOL ASSAULT HAH: 18-24 YRS (PER 10,000)	20.4	
ALCOHOL ASSAULT HAH: MALE (PER 10,000)	9.8	
ALCOHOL ASSAULT HAH: FEMALE (PER 10,000)	11	
ALCOHOL FAMILY VIOLENCE RATE: TOTAL (DEFINITE INCIDENTS PER 10,000)	17.6	
ALCOHOL FAMILY VIOLENCE RATE: 18-24 YRS (DEFINITE INCIDENTS PER 10,000)	19.6	
ALCOHOL FAMILY VIOLENCE RATE: MALE (DEFINITE INCIDENTS PER 10,000)	8.1	
ALCOHOL FAMILY VIOLENCE RATE: FEMALE (DEFINITE INCIDENTS PER 10,000)	26.8	
<b>YOUNG PEOPLE</b>		
PERCENT 15-17 YEAR OLDS WHO DRANK ALCOHOL IN THE PAST 30 DAYS	50.6%	24.7%
PERCENT 15-17 YEAR OLDS WHO SMOKED IN THE PAST 30 DAYS	26.6%	12.9%
PERCENT 15-17 YEAR OLDS WHO EVER - USED MARIJUANA	22.8%	10.9%
PERCENT 15-17 YEAR OLDS WHO EVER - SNIFFED GLUE OR CHROMED	8.1%	7.8%
PERCENT 15-17 YEAR OLDS WHO EVER - USED OTHER ILLEGAL DRUGS	1.1%	3.0%
<b>PHARMACEUTICALS</b>		
PHARMACEUTICAL AMBULANCE RATE: TOTAL (ATTENDANCES PER 10,000)	19.8	
PHARMACEUTICAL AMBULANCE RATE: 15-24 YRS (ATTS./10,000)	13.4	
PHARMACEUTICAL AMBULANCE RATE: MALE (ATTS./10,000)	17.7	
PHARMACEUTICAL AMBULANCE RATE: FEMALE (ATTS./10,000)	21.7	
PHARMACEUTICAL ADIS RATE: TOTAL (TX EOCS PER 10,000)	2.5	
PHARMACEUTICAL ADIS RATE: 15-24 YRS (TX EOCS PER 10,000)	3.2	
PHARMACEUTICAL ADIS RATE: MALE (TX EOCS PER 10,000)	3.3	
PHARMACEUTICAL ADIS RATE: FEMALE (TX EOCS PER 10,000)	1.8	
PHARMACEUTICAL ED PRESENTATION RATE: TOTAL (PRESENTATIONS PER 10,000)	10	
PHARMACEUTICAL ED RATE: 15-24YRS (PRSTNS/10,000)	18.6	
PHARMACEUTICAL ED RATE: MALE (PRSTNS/10,000)	7	
PHARMACEUTICAL ED RATE: FEMALE (PRSTNS/10,000)	13	
<b>ILLCIT DRUGS</b>		
ILLCIT AMBULANCE RATE: TOTAL (ATTS./10,000)	14.7	
ILLCIT AMBULANCE RATE: 15-24YRS (ATTS./10,000)	20.5	
ILLCIT AMBULANCE RATE: MALE (ATTS./10,000)	20.8	
ILLCIT AMBULANCE RATE: FEMALE (ATTS./10,000)	8.5	
ILLCIT ADIS RATE: TOTAL (TX EOCS PER 10,000)	33.2	
ILLCIT ADIS RATE: 15-24 YRS (TX EOCS PER 10,000)	56.9	
ILLCIT ADIS RATE: MALE (TX EOCS PER 10,000)	50.2	
ILLCIT ADIS RATE: FEMALE (TX EOCS PER 10,000)	16.1	
ILLCIT ED RATE: TOTAL (PRSTNS/10,000)	2.4	
ILLCIT ED RATE: 15-24 YRS (PRSTNS/10,000)	3.5	
ILLCIT ED RATE: MALE (PRSTNS/10,000)	3.5	
ILLCIT ED RATE: FEMALE (PRSTNS/10,000)	1.4	
<b>SERVICE USE &amp; ACCESS</b>		
DRUG USE & POSSESSION OFFENCES PER 1000 POPULATION	6.1	3.8
DRUG AND ALCOHOL CLIENTS PER 1000	6.3	5.8
REGISTERED MENTAL HEALTH CLIENTS PER 1000	10.7	11.1

### Comparisons & context:

\*Red text – shows where the figure is in the top 3 highest rates for all 14 LGAs in the North & West catchments.

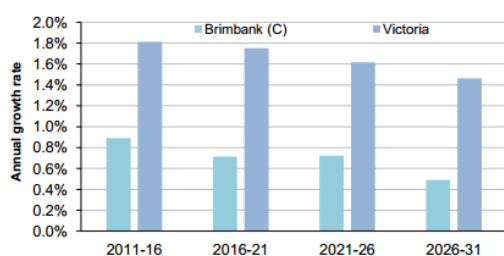
\* Orange text – shows that the rate is higher than the state average

## Mental health in Brimbank

	BRIMBANK	VICTORIA
<b>MENTAL HEALTH ISSUES</b>		
PEOPLE REPORTING HIGH/VERY HIGH LEVELS OF PSYCHOLOGICAL DISTRESS (RANK)	14.4% (6)	11.1%
LIFETIME PREVALENCE OF ANXIETY AND DEPRESSION M/ F	11.5/ 22.8	14.6/25.0
<b>SERVICE USE &amp; ACCESS</b>		
NUMBER OF REGISTERED MENTAL HEALTH CLIENTS	2072	
REGISTERED MENTAL HEALTH CLIENTS PER 1000 POP (RANK)	10.7 (52)	11.1
MHCSS CLIENTS 2014	210	
MHCSS CLIENTS 2014 PER 1000 POPULATION	1.6	
PROPORTION OF PEOPLE WHO SOUGHT PROFESSIONAL HELP FOR A MENTAL HEALTH PROBLEM	13.7%	12.4%
<b>YOUNG PEOPLE</b>		
CHILDREN WITH EMOTIONAL/BEHAVIOURAL PROBLEMS AT SCHOOL AGE (RANK)	3.7% (44)	4.3%
ADOLESCENTS WHO REPORT BEING RECENTLY BULLIED (RANK)	17.5% (50)	17.9%

## Population projections

Average annual population growth rate 2011 to 2031



This graph shows Brimbank has a much lower than average projected growth rate for its population to 2031.

## Aligned planning priorities



**The Community Plan 2009 – 2030** is a strategic plan with long term goals. It informs the Council Plan and incorporate the Health and Wellbeing Plan. It identifies that key challenges are: *education and lifelong learning, transport, employment, and housing*. There are no specific health issues identified, and mental health or alcohol and drug issues are not mentioned. The City of Brimbank has a number of other plans which fall out of the Community Plan, including a location specific plan, and an aged plan.

The **Brimbank Community Safety Framework and Action Plan** is working to improve needle syringe disposal and exchange programs and using other networks to increase awareness of AOD issues and services. It will also map the number of prescribers and dispensing pharmacies for opiate substitution (e.g. methadone, buprenorphine) in Brimbank and investigate what Council can do to increase these services; analyse the feasibility of a safe injecting facility in Brimbank, and develop a program to address drinking in public places in Sunshine through engagement with at risk community members.



**Macedon Ranges and North West Melbourne Medicare Local Comprehensive Needs Assessment (2014 – 2017)** identifies a high level of mental health issues amongst the refugee population and high overall smoking rates. Responses include improving information for GPs to assist with referral to the correct health service, integrating care for patients as they access different health services from multiple providers, and improving access to mental health services through establishment of mental health nurses in GP clinics and other health services.



The **Health West Partnership Strategic Plan (2013-2017)** has four key focus areas of service coordination/integrated chronic disease management, prevention, aboriginal health and home and community care. Its four activity streams are health literacy, integration, community participation and collaborative action. The Integrated Mental Health Services for Refugee Asylum Project aims to improve access and participation by refugees to mental health services. AoD does not specifically feature in 2013 – 14 activity but past prevention and advocacy work has included activity to increase access to needle, syringes and opioid replacement therapies; and other AOD issues in the west.



**Better Health Plan for the West (BHPW)** is a 10-year plan developed in partnership with over 20 agencies across primary care, acute health, government, social support and other sectors delivering services in the Western Region of Melbourne. The BHPW identifies mental health as one of three high priority health issues, and details a planned response to this issue. It has key initiatives under health literacy, models of care, human resources, service provision, e-health, research and partnership coordination.

The **North West Mental Health and MHCSS partnership** has the following four priorities: AoD interface, priority access issues, service coordination/client pathways and residential services.