

# Maribyrnong

## North West Melbourne



**Area (2011):** 31km<sup>2</sup>

**Population density (2011):** 2,408.8 persons/km

**Major centres:** Footscray, Yarraville, Maidstone

Located directly to the west of Melbourne's CBD, Maribyrnong is densely populated with high projected population growth and a proportion of 25-44 year olds that is well above average. Over 10% of residents were born in Vietnam, and almost half speak a language other than English at home.

Gaming machine losses are the 3<sup>rd</sup> highest of all Victorian LGAs, drug offences are the 5<sup>th</sup> highest and total crime is well above average. Unemployment rates are also high.

Looking across the relevant AOD indicators across our four North & West catchments, Maribyrnong emerges as a 'hot spot', featuring in the top 3 for 29/60 measures we have available – especially around pharmaceuticals and illicit drugs. The lifetime prevalence of anxiety and depression for men is high (18.2 compared to 14.6 in the state), however, the proportion of people seeking professional help for a mental health issues is slightly lower than the average (11.2 compared to 12.4 for the state). The area has the lowest percentage of people who believe there are good facilities and services in the LGA across our 4 catchments.

## Population

	MARIBYRNONG	VICTORIA
<b>TOTAL POPULATION</b>	76,589	
<b>ABORIGINAL &amp; TORRES STRAIT ISLANDER PEOPLES</b>	0.6%	0.8%
<b>DIVERSITY</b>		
<b>PERCENT BORN OVERSEAS</b>	43.1%	27.7%
<b>PERCENT BORN IN NON ENGLISH SPEAKING COUNTRY</b>	37.8%	20.9%
<b>PERCENT SPEAKING LANGUAGE OTHER THAN ENGLISH AT HOME</b>	46.3%	24.2%
<b>PERCENT WITH LOW ENGLISH PROFICIENCY</b>	10.7%	4.0%
<b>NEW SETTLER ARRIVALS PER 100,000</b>	2,647.9	1,415.1
<b>SOCIO-ECONOMIC INDICATORS</b>		
<b>UNEMPLOYMENT RATE</b>	7.5%	5.8%
<b>INDEX RELATIVE SOCIO ECONOMIC DISADVANTAGE</b>	974	1000
<b>MEDIAN HOUSEHOLD INCOME</b>	\$1,257	\$1,216
<b>MORTGAGE STRESS / RENTAL STRESS</b>	9.4% / 24.8%	11.4% / 25.1%
<b>GAMING MACHINE LOSSES PER HEAD OF ADULT POPULATION</b>	\$841.1	\$549.50
<b>PERCENT OF POPULATION WITH FOOD INSECURITY</b>	2.8%	4.6%
<b>FAMILY INCIDENTS (RATE PER 1000 POPULATION)</b>	10.3	10.8
<b>TOTAL OFFENCES (RATE PER 1000 POPULATION)</b>	100.2	72.2
<b>SUBSTANTIATED CHILD ABUSE (RATE PER 1000 POPULATION)</b>	5.9	6.7
<b>CHILD PROTECTION ORDERS (RATE PER 1000 POPULATION)</b>	7.2	5.2
<b>CHILDREN IN OUT OF HOME CARE (RATE PER 1000 POPULATION)</b>	4.0	4.6
<b>COMMUNITY</b>		
<b>PEOPLE WHO FEEL SAFE WALKING ALONE AFTER DARK</b>	64.1%	70.3%
<b>PERCENT OF POPULATION NEAR TO PUBLIC TRANSPORT</b>	96.9%	74.2%
<b>PEOPLE WHO BELIEVE THERE ARE GOOD FACILITIES AND SERVICES IN THE LGA</b>	77.7%	85.2%
<b>HEALTH &amp; WELLBEING</b>		
<b>PERSONS REPORTING FAIR OR POOR HEALTH</b>	16.9%	15.9%
<b>GENERAL PRACTICES PER 1000</b>	1.1	1.2
<b>PHARMACIES PER 1000</b>	0.3	0.2

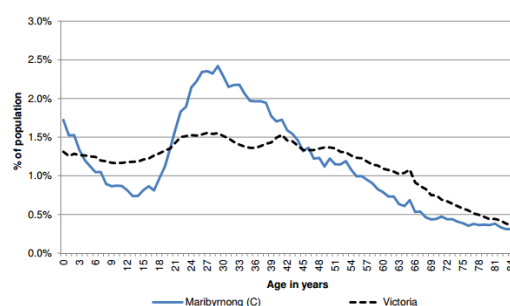
### Top 5 overseas countries of birth:

- Vietnam (10.3%)
- India (4.4%)
- China (3.2%)
- UK (2.8%)
- NZ (1.9%)

### Top 5 languages other than English:

- Vietnamese (12.9%)
- Cantonese (3.9%)
- Greek (2.9%)
- Mandarin (2.9%)
- Italian (2.6%)

### Age distribution (2012)



## Alcohol, tobacco & other drugs in Maribyrnong

	MARIBYRNONG	VICTORIA
PERCENTAGE PERSONS WHO ARE CURRENT SMOKERS (18+)	16.0%	15.7%
18+ FEMALES CURRENT SMOKERS	10.7%	12.9%
18+ MALES CURRENT SMOKERS	21.4%	18.5%
<b>ALCOHOL</b>		
PERCENTAGE PERSONS AT RISK OF SHORT TERM HARM FROM ALCOHOL CONSUMPTION	5.6%	10.2%
PURCHASED ALCOHOL IN THE LAST 7 DAYS	40.3%	36.3%
7 DAY \$ SPEND ON PACKAGED LIQUOR (OF THOSE PURCHASING)	\$38.0	\$45.00
7 DAY \$ SPEND AT A LICENSED PREMISES (OF THOSE PURCHASING)	\$36.0	\$45.00
ALCOHOL AMBULANCE RATE: TOTAL (ATTENDENCES PER 10,000)	43	
ALCOHOL AMBULANCE RATE: 15-24 YRS (ATTS./10,000)	41.6	
ALCOHOL AMBULANCE RATE: MALE (ATTS./10,000)	62.1	
ALCOHOL AMBULANCE RATE: FEMALE (ATTS./10,000)	23	
ALCOHOL ADIS RATE: TOTAL (TX EOCS PER 10,000)	22.9	
ALCOHOL ADIS RATE: 15-24 YRS (TX EOCS PER 10,000)	27.6	
ALCOHOL ADIS RATE: MALE (TX EOCS PER 10,000)	33.2	
ALCOHOL ADIS RATE: FEMALE (TX EOCS PER 10,000)	12.2	
ALCOHOL ED RATE: TOTAL (PRESENTATIONS PER 10,000)	18.8	
ALCOHOL ED RATE: 15-24 YRS (PRSTNS/10,000)	25.4	
ALCOHOL ED RATE: MALE (PRSTNS/10,000)	25.3	
ALCOHOL ED RATE: FEMALE (PRSTNS/10,000)	12	
SERIOUS ROAD INJURIES DURING HIGH ALCOHOL HOURS: TOTAL (PER 10,000)	4.1	
SERIOUS ROAD INJURIES DURING HAH: 15-24 YRS (PER 10,000)	9.8	
SERIOUS ROAD INJURIES DURING HAH: MALE (PER 10,000)	4.6	
SERIOUS ROAD INJURIES DURING HAH: FEMALE (PER 10,000)	3.5	
ALCOHOL ASSAULT HAH: TOTAL (PER 10,000)	12.1	
ALCOHOL ASSAULT HAH: 18-24 YRS (PER 10,000)	38.1	
ALCOHOL ASSAULT HAH: MALE (PER 10,000)	13.3	
ALCOHOL ASSAULT HAH: FEMALE (PER 10,000)	10.6	
ALCOHOL FAMILY VIOLENCE RATE: TOTAL (DEFINITE INCIDENTS PER 10,000)	19.9	
ALCOHOL FAMILY VIOLENCE RATE: 18-24 YRS (DEFINITE INCIDENTS PER 10,000)	22.1	
ALCOHOL FAMILY VIOLENCE RATE: MALE (DEFINITE INCIDENTS PER 10,000)	7.9	
ALCOHOL FAMILY VIOLENCE RATE: FEMALE (DEFINITE INCIDENTS PER 10,000)	31.9	
<b>YOUNG PEOPLE</b>		
PERCENT 15-17 YEAR OLDS WHO DRANK ALCOHOL IN THE PAST 30 DAYS	46.9%	24.7%
PERCENT 15-17 YEAR OLDS WHO SMOKED IN THE PAST 30 DAYS	24.9%	12.9%
PERCENT 15-17 YEAR OLDS WHO EVER - USED MARIJUANA	23.5%	10.9%
PERCENT 15-17 YEAR OLDS WHO EVER - SNIFFED GLUE OR CHROMED	4.9%	7.8%
PERCENT 15-17 YEAR OLDS WHO EVER - USED OTHER ILLEGAL DRUGS	4.0%	3.0%
<b>PHARMACEUTICALS</b>		
PHARMACEUTICAL AMBULANCE RATE: TOTAL (ATTENDANCES PER 10,000)	28.6	
PHARMACEUTICAL AMBULANCE RATE: 15-24 YRS (ATTS./10,000)	21.5	
PHARMACEUTICAL AMBULANCE RATE: MALE (ATTS./10,000)	25.6	
PHARMACEUTICAL AMBULANCE RATE: FEMALE (ATTS./10,000)	31.5	
PHARMACEUTICAL ADIS RATE: TOTAL (TX EOCS PER 10,000)	3.4	
PHARMACEUTICAL ADIS RATE: 15-24 YRS (TX EOCS PER 10,000)	4.6	
PHARMACEUTICAL ADIS RATE: MALE (TX EOCS PER 10,000)	3.5	
PHARMACEUTICAL ADIS RATE: FEMALE (TX EOCS PER 10,000)	3.3	
PHARMACEUTICAL ED PRESENTATION RATE: TOTAL (PRESENTATIONS PER 10,000)	10.5	
PHARMACEUTICAL ED RATE: 15-24YRS (PRSTNS/10,000)	20.5	
PHARMACEUTICAL ED RATE: MALE (PRSTNS/10,000)	7.9	
PHARMACEUTICAL ED RATE: FEMALE (PRSTNS/10,000)	13.1	
<b>ILLCIT DRUGS</b>		
ILLCIT AMBULANCE RATE: TOTAL (ATTS./10,000)	27.9	
ILLCIT AMBULANCE RATE: 15-24YRS (ATTS./10,000)	26.1	
ILLCIT AMBULANCE RATE: MALE (ATTS./10,000)	38.8	
ILLCIT AMBULANCE RATE: FEMALE (ATTS./10,000)	16.6	
ILLCIT ADIS RATE: TOTAL (TX EOCS PER 10,000)	35.7	
ILLCIT ADIS RATE: 15-24 YRS (TX EOCS PER 10,000)	71	
ILLCIT ADIS RATE: MALE (TX EOCS PER 10,000)	51.9	
ILLCIT ADIS RATE: FEMALE (TX EOCS PER 10,000)	18.8	
ILLCIT ED RATE: TOTAL (PRSTNS/10,000)	3.4	
ILLCIT ED RATE: 15-24 YRS (PRSTNS/10,000)	7.8	
ILLCIT ED RATE: MALE (PRSTNS/10,000)	3.8	
ILLCIT ED RATE: FEMALE (PRSTNS/10,000)	2.9	
<b>SERVICE USE &amp; ACCESS</b>		
DRUG USE & POSSESSION OFFENCES PER 1000 POPULATION	7.7	3.8
DRUG AND ALCOHOL CLIENTS PER 1000	6.4	5.8

### Comparisons & context:

\*Red text – shows where the figure is in the top 3 highest rates for all 14 LGAs in the North & West catchments.

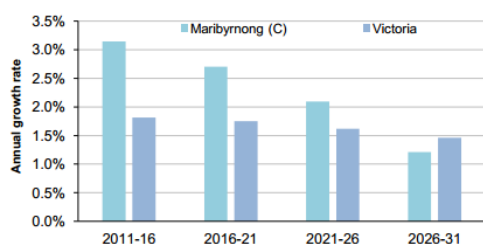
\* Orange text – shows that the rate is higher than the state average

## Mental health in Maribyrnong

	MARIBYRNONG	VICTORIA
PEOPLE REPORTING HIGH/VERY HIGH LEVELS OF PSYCHOLOGICAL DISTRESS (RANK)	10.8% (37)	11.10%
LIFETIME PREVALENCE OF ANXIETY AND DEPRESSION M/ F	18.2/ 23.3	14.6/25.0
<b>SERVICE USE</b>		
NUMBER OF REGISTERED MENTAL HEALTH CLIENTS	904	
REGISTERED MENTAL HEALTH CLIENTS PER 1000 POP (RANK)	11.8 (47)	11.1
MHCSS CLIENTS 2014	122	
MHCSS CLIENTS 2014 PER 1000 POPULATION	2.16	
PROPORTION OF PEOPLE WHO SOUGHT PROFESSIONAL HELP FOR A MENTAL HEALTH PROBLEM	11.2	12.4
<b>YOUNG PEOPLE</b>		
CHILDREN WITH EMOTIONAL/BEHAVIOURAL PROBLEMS AT SCHOOL AGE (RANK)	3.7% (42)	4.30%
ADOLESCENTS WHO REPORT BEING RECENTLY BULLIED (RANK)	14.3% (65)	17.90%

## Population projections

Average annual population growth rate 2011 to 2031



This graph shows the population growth for Maribyrnong will measure well above the Victorian average to around 2026. Strong population growth such as this requires strategic planning of services and infrastructure to meet the increasing demands of a changing community.

## Aligned planning priorities



The **City of Maribyrnong Council Plan (2013 – 2017)** includes health and wellbeing. It has six priority areas: urban growth; liveability; economic prosperity; transport; environmental sustainability, organisational accountability. The plan recognises that drug and alcohol use continues to negatively impact the wellbeing of the community and is addressed in strategies under the liveability priority.

There is no specific identification of mental health issues or needs.



**Macedon Ranges and North West Melbourne Medicare Local comprehensive needs assessment (2014 – 2017)** identifies a high level of mental health issues amongst the refugee population and high overall smoking rates, high risk alcohol consumption (except for Brimbank, Maribyrnong and Melton East). Responses include improving information for GPs to assist with referral to the correct health service, integrating care for patients as they access different health services from multiple providers, and improving access to mental health services through establishment of mental health nurses in GP clinics and other health services.



The **Health West Partnership Strategic Plan (2013-2017)** has four key focus areas of service coordination/integrated chronic disease management, prevention, aboriginal health and home and community care. Its four activity streams are health literacy, integration, community participation and collaborative action. The Integrated Mental Health Services for Refugee Asylum Project aims to improve access and participation by refugees to mental health services. AoD does not specifically feature in 2013 – 14 activity but past prevention and advocacy work has included activity to increase access to needle, syringes and opioid replacement therapies; and other AOD issues in the west.



**Better Health Plan for the West (BHPW)** is a 10-year plan developed in partnership with over 20 agencies across primary care, acute health, government, social support and other sectors delivering services in the Western Region of Melbourne. The BHPW identifies mental health as one of three high priority health issues, and details a planned response to this issue. It has key initiatives under health literacy, models of care, human resources, service provision, e-health, research and partnership coordination.