

Melton

North West Melbourne



Area (2011): 528²

Population density (2011): 213.5 persons/km

Major centres: Melton, Diggers Rest, Hillside

Population

Melton is an urban fringe municipality west of Melbourne's CBD. It has a very high population growth rate projected to continue to 2031. It has the highest unemployment rate in the whole of the North & West, and the third highest in Victoria.

Melton has a relatively young population (24% aged 0-14 years), and the North & West's highest proportion of 15-17 year olds who drank alcohol in the past 30 days (58.7% compared to 24.7% in the state). Young people's main substances of choice appear to be alcohol, tobacco and marijuana.

The population at risk of short term harm from alcohol is relatively low but overall smoking rates are second highest in the State. There is a high incidence of family violence including where alcohol was involved (especially for the 18-24 year olds).

Melton has the highest rate of psychological distress in the State but the proportion of people seeking professional help for a mental health problem is lower than average (10.2% compared to 12.4% in the state). This suggests an access issue further evidenced by the low rates of GPs and pharmacists per 1000 of the population.

Melton has the lowest female life expectancy across all catchments at 82.3 years (state average 84.4) and the highest percentage of residents reporting type 2 diabetes (8.5%, state average 4.8%).

	MELTON	VICTORIA
TOTAL POPULATION	117,982	
ABORIGINAL & TORRES STRAIT ISLANDER PEOPLES	0.8%	0.8%
DIVERSITY		
PERCENT BORN OVERSEAS	29.3%	27.7%
PERCENT BORN IN NON ENGLISH SPEAKING COUNTRY	23.6%	20.9%
PERCENT SPEAKING LANGUAGE OTHER THAN ENGLISH AT HOME	30.5%	24.2%
PERCENT WITH LOW ENGLISH PROFICIENCY	3.7%	4.0%
NEW SETTLER ARRIVALS PER 100,000	1,527.4	1,415.1
SOCIO-ECONOMIC INDICATORS		
UNEMPLOYMENT RATE	8.9%	5.8%
SEIFA	1002	1000
MEDIAN HOUSEHOLD INCOME	\$1,363	\$1,216
MORTGAGE STRESS / RENTAL STRESS	14.1% / 29.3%	11.4% / 25.1%
GAMING MACHINE LOSSES PER HEAD OF ADULT POPULATION	\$600.50	\$549.50
PERCENT OF POPULATION WITH FOOD INSECURITY	3.1%	4.6%
FAMILY INCIDENTS (RATE PER 1000 POPULATION)	12.4	10.8
TOTAL OFFENCES (RATE PER 1000 POPULATION)	75.8	72.2
SUBSTANTIATED CHILD ABUSE (RATE PER 1000 POPULATION)	5.0	6.7
CHILD PROTECTION ORDERS (RATE PER 1000 POPULATION)	4.5	5.2
CHILDREN IN OUT OF HOME CARE (RATE PER 1000 POPULATION)	4.1	4.6
COMMUNITY		
PEOPLE WHO FEEL SAFE WALKING ALONE AFTER DARK	57.6%	70.3%
PERCENT OF POPULATION NEAR TO PUBLIC TRANSPORT	71.5%	74.2%
PEOPLE WHO BELIEVE THERE ARE GOOD FACILITIES AND SERVICES IN THE LGA	81.8%	85.2%
HEALTH & WELLBEING		
PEOPLE REPORTING HIGH/V. HIGH LEVELS OF PSYCHOLOGICAL DISTRESS	20.7%	11.1%
PERSONS REPORTING FAIR OR POOR HEALTH	18.7%	15.9%
CHILDREN WITH EMOTIONAL/BEHAVIOURAL PROBLEMS AT SCHOOL AGE	5.4%	4.3%
ADOLESCENTS WHO REPORT BEING RECENTLY BULLIED	19.2%	17.9%
GENERAL PRACTICES PER 1000	0.9	1.2
PHARMACIES PER 1000	0.1	0.2

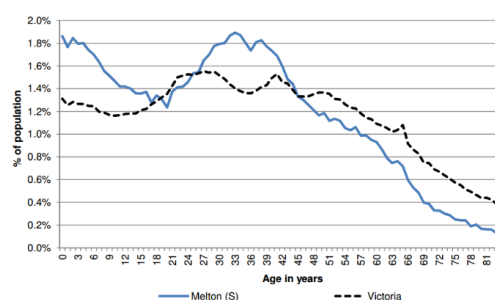
Top 5 overseas countries of birth:

- UK (3.2%)
- India (2.7%)
- Philippines (2.7%)
- NZ (1.9%)
- Malta (1.8%)

Top 5 languages other than English:

- Maltese (2.3%)
- Italian (2.0%)
- Macedn. (1.9%)
- Vietnamese (1.9%)
- Arabic (1.6%)

Age distribution (2012)



Alcohol, tobacco & other drugs in Melton

	MELTON	VICTORIA
PERCENTAGE PERSONS WHO ARE CURRENT SMOKERS (18+)	22.0%	15.7%
18+ FEMALES CURRENT SMOKERS	19.4%	12.9%
18+ MALES CURRENT SMOKERS	24.4%	18.5%
ALCOHOL		
PERCENTAGE PERSONS AT RISK OF SHORT TERM HARM FROM ALCOHOL CONSUMPTION	5.7%	10.2%
PURCHASED ALCOHOL IN THE LAST 7 DAYS	29.1%	36.3%
7 DAY \$ SPEND ON PACKAGED LIQUOR (OF THOSE PURCHASING)	\$28.0	\$45.00
7 DAY \$ SPEND AT A LICENSED PREMISES (OF THOSE PURCHASING)	\$52.0	\$45.00
ALCOHOL AMBULANCE RATE: TOTAL (ATTENDANCES PER 10,000)	22.8	
ALCOHOL AMBULANCE RATE: 15-24 YRS (ATTS./10,000)	39.4	
ALCOHOL AMBULANCE RATE: MALE (ATTS./10,000)	28.6	
ALCOHOL AMBULANCE RATE: FEMALE (ATTS./10,000)	17	
ALCOHOL ADIS RATE: TOTAL (TX EOCS PER 10,000)	18.3	
ALCOHOL ADIS RATE: 15-24 YRS (TX EOCS PER 10,000)	18.8	
ALCOHOL ADIS RATE: MALE (TX EOCS PER 10,000)	24.8	
ALCOHOL ADIS RATE: FEMALE (TX EOCS PER 10,000)	11.8	
ALCOHOL ED RATE: TOTAL (PRESENTATIONS PER 10,000)	8.2	
ALCOHOL ED RATE: 15-24 YRS (PRSTNS/10,000)	13.1	
ALCOHOL ED RATE: MALE (PRSTNS/10,000)	9	
ALCOHOL ED RATE: FEMALE (PRSTNS/10,000)	7.4	
SERIOUS ROAD INJURIES DURING HIGH ALCOHOL HOURS: TOTAL (PER 10,000)	2.7	
SERIOUS ROAD INJURIES DURING HAH: 15-24 YRS (PER 10,000)	6.9	
SERIOUS ROAD INJURIES DURING HAH: MALE (PER 10,000)	4.1	
SERIOUS ROAD INJURIES DURING HAH: FEMALE (PER 10,000)	1.4	
ALCOHOL ASSAULT HAH: TOTAL (PER 10,000)	10.3	
ALCOHOL ASSAULT HAH: 18-24 YRS (PER 10,000)	22.1	
ALCOHOL ASSAULT HAH: MALE (PER 10,000)	9.5	
ALCOHOL ASSAULT HAH: FEMALE (PER 10,000)	10.4	
ALCOHOL FAMILY VIOLENCE RATE: TOTAL (DEFINITE INCIDENTS PER 10,000)	19	
ALCOHOL FAMILY VIOLENCE RATE: 18-24 YRS (DEFINITE INCIDENTS PER 10,000)	34.1	
ALCOHOL FAMILY VIOLENCE RATE: MALE (DEFINITE INCIDENTS PER 10,000)	9.9	
ALCOHOL FAMILY VIOLENCE RATE: FEMALE (DEFINITE INCIDENTS PER 10,000)	27.5	
YOUNG PEOPLE		
PERCENT 15-17 YEAR OLDS WHO DRANK ALCOHOL IN THE PAST 30 DAYS	58.7%	24.7%
PERCENT 15-17 YEAR OLDS WHO SMOKED IN THE PAST 30 DAYS	19.0%	12.9%
PERCENT 15-17 YEAR OLDS WHO EVER - USED MARIJUANA	13.8%	10.9%
PERCENT 15-17 YEAR OLDS WHO EVER - SNIFFED GLUE OR CHROMED	5.7%	7.8%
PERCENT 15-17 YEAR OLDS WHO EVER - USED OTHER ILLEGAL DRUGS	1.6%	3.0%
PHARMACEUTICALS		
PHARMACEUTICAL AMBULANCE RATE: TOTAL (ATTENDANCES PER 10,000)	21.4	
PHARMACEUTICAL AMBULANCE RATE: 15-24 YRS (ATTS./10,000)	14.4	
PHARMACEUTICAL AMBULANCE RATE: MALE (ATTS./10,000)	18.3	
PHARMACEUTICAL AMBULANCE RATE: FEMALE (ATTS./10,000)	24	
PHARMACEUTICAL ADIS RATE: TOTAL (TX EOCS PER 10,000)	2.2	
PHARMACEUTICAL ADIS RATE: 15-24 YRS (TX EOCS PER 10,000)	n/a	
PHARMACEUTICAL ADIS RATE: MALE (TX EOCS PER 10,000)	2.5	
PHARMACEUTICAL ADIS RATE: FEMALE (TX EOCS PER 10,000)	2	
PHARMACEUTICAL ED PRESENTATION RATE: TOTAL (PRESENTATIONS PER 10,000)	10.3	
PHARMACEUTICAL ED RATE: 15-24YRS (PRSTNS/10,000)	21.2	
PHARMACEUTICAL ED RATE: MALE (PRSTNS/10,000)	7.2	
PHARMACEUTICAL ED RATE: FEMALE (PRSTNS/10,000)	13.3	
ILLICIT DRUGS		
ILLICIT AMBULANCE RATE: TOTAL (ATTS./10,000)	9.6	
ILLICIT AMBULANCE RATE: 15-24YRS (ATTS./10,000)	26.5	
ILLICIT AMBULANCE RATE: MALE (ATTS./10,000)	13.1	
ILLICIT AMBULANCE RATE: FEMALE (ATTS./10,000)	6	
ILLICIT ADIS RATE: TOTAL (TX EOCS PER 10,000)	32.1	
ILLICIT ADIS RATE: 15-24 YRS (TX EOCS PER 10,000)	83	
ILLICIT ADIS RATE: MALE (TX EOCS PER 10,000)	46.5	
ILLICIT ADIS RATE: FEMALE (TX EOCS PER 10,000)	17.7	
ILLICIT ED RATE: TOTAL (PRSTNS/10,000)	1.4	
ILLICIT ED RATE: 15-24 YRS (PRSTNS/10,000)	3.1	
ILLICIT ED RATE: MALE (PRSTNS/10,000)	1.2	
ILLICIT ED RATE: FEMALE (PRSTNS/10,000)	1.5	
SERVICE USE & ACCESS		
DRUG USE & POSSESSION OFFENCES PER 1000 POPULATION	3.9	3.8
DRUG AND ALCOHOL CLIENTS PER 1000	5.4	5.8
REGISTERED MENTAL HEALTH CLIENTS PER 1000	9.6	11.1

Comparisons & context:

*Red text – shows where the figure is in the top 3 highest rates for all 14 LGAs in the North & West catchments.

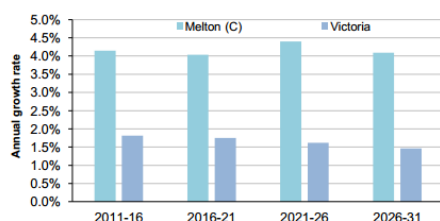
* Orange text – shows that the rate is higher than the state average

Mental health in Melton

	MELTON	VICTORIA
PEOPLE REPORTING HIGH/VERY HIGH LEVELS OF PSYCHOLOGICAL DISTRESS (RANK)	20.7% (1)	11.1%
LIFETIME PREVALENCE OF ANXIETY AND DEPRESSION M/ F	11.4/ 28	14.6/25.0
SERVICE USE		
NUMBER OF REGISTERED MENTAL HEALTH CLIENTS	1133	
REGISTERED MENTAL HEALTH CLIENTS PER 1000 POP (RANK)	9.6 (58)	11.1
MHCSS CLIENTS 2014	76	
MHCSS CLIENTS 2014 PER 1000 POPULATION	0.94	
PROPORTION OF PEOPLE WHO SOUGHT PROFESSIONAL HELP FOR A MENTAL HEALTH PROBLEM	10.20%	12.40%
YOUNG PEOPLE		
CHILDREN WITH EMOTIONAL/BEHAVIOURAL PROBLEMS AT SCHOOL AGE (RANK)	5.4% (22)	4.30%
ADOLESCENTS WHO REPORT BEING RECENTLY BULLIED (RANK)	19.2% (34)	17.90%

Projections & emerging priorities

Average annual population growth rate 2011 to 2031



This graph shows projected growth far above the state average. Melton forms part of the 'Sunbury & Diggers Rest' growth corridor, which is one of 4 such areas greater Melbourne. With very high projected population growth, over the next 30-40 years these areas are expected to accommodate close to half of Melbourne's new housing and industry.

The associated demands on service provision and community infrastructure command specific management strategies to address the needs of their growing populations.

Aligned planning priorities



The **Melton Health and Wellbeing Plan** has four themes - Healthy Places; Healthy Community; Healthy People; and Healthy Lifestyles. It notes high levels of psychological distress, high rates of mental and behaviour disorders and fewer mental health clients. It also notes low alcohol and drug service users, average rates of AoD use and high smoking rates. Mental health is a named priority action area under Healthy Communities; and includes working with the community to understand the impact of mental health issues, initiatives to support social inclusion for people with a mental illness and initiatives to address prevalence of mental health issues in the community. Smoking and alcohol and drugs are named priority action areas under Healthy Lifestyles and focus on harm minimisation and harm reduction initiatives.

The **Melton City Council Community Safety Plan (2010-2014)** identifies priority areas for action: community connectedness, a safe, clean and welcoming environment, family violence prevention, reduction of antisocial behaviour, alcohol and substance abuse harm minimisation, partnerships to improve community safety and safer access and movement. Specific actions to address alcohol and substance abuse include: Providing services & community education; adherence to responsible service of alcohol and considering impact of liquor licensing permit applications, and alcohol and drug free events for young people.



Macedon Ranges and North West Melbourne Medicare Local comprehensive needs assessment (2014 – 2015) identifies a high level of mental health issues amongst the refugee population and high smoking rates across all age groups and locations, high risky alcohol consumption (except for Brimbank, Maribyrnong and Melton East). Responses include improving information for GPs to assist with referral to the correct health service, integrating care for patients as they access different health services from multiple providers, and improving access to mental health services through establishment of mental health nurses in GP clinics and other health services.

The **Child and Youth Pathways – Western Mental Health Project (2013)** was auspiced through the Health West Partnership with an aim to provide young people with mental health issues living in Melton and Wyndham with the best possible opportunities for receiving referrals in a timely manner to the most appropriate service provider. It developed interagency care planning and information sharing protocols.



Better Health Plan for the West (BHPW) is a 10-year plan developed in partnership with over 20 agencies across primary care, acute health, government, social support and other sectors delivering services in the Western Region of Melbourne. The BHPW identifies mental health as one of three high priority health issues, and details a planned response to this issue. It has key initiatives under health literacy, models of care, human resources, service provision, e-health, research and partnership coordination.

North West Mental Health and MHCSS partnership has four priorities: AoD interface, priority access issues, service coordination/client pathways and residential services.